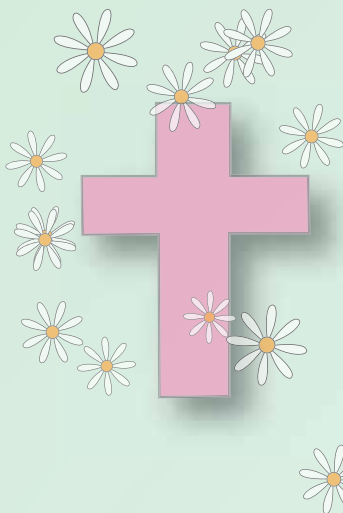


East Kempsey Cemetery

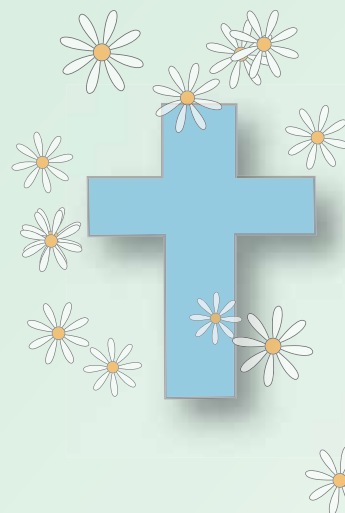
Have you seen a lot of blue and pink crosses in the cemetery recently and wondered what they represent?

Prior to 1967 the cemeteries were administered by various church and community trustees. Due to the number of trustees involved many of the records are incomplete, missing or incorrect. Council has researched numerous avenues to find the missing information, however gaps still exist.

Council is now calling for information from the public. To assist the compilation of public information **Blue** and **Pink** crosses have been erected in the old monumental sections of this cemetery.



Pink Crosses indicate vacant plots available for burials or reservations (single depth only). Cost of reservation is \$315.00.



Blue Crosses indicate reserves prior to 1967 where no name was recorded in registers from Trustees or the relevant church.

If you or a family member have a reserve prior to 1967 at EAST KEMPSEY CEMETERY especially where a blue cross has been erected, please contact ***Council's Community Services Administration Officer, Mrs Jennifer Colling on (02) 65 663220.***