

KEMPSEY SHIRE

Population Profile 2005



Produced by
KEMPSEY SHIRE COUNCIL
October 2005

The Kempsey Shire is located on the Mid North Coast of New South Wales (NSW), approximately 428km north of Sydney.

The Shire is located immediately south of the Nambucca Shire, immediately north of the Port Macquarie - Hastings Council area and east of the Walcha and Armidale Dumaresq Shires. The total area of the Kempsey Shire is 3379 square kilometres (ABS 2001).

The Kempsey Shire is known as the Macleay Valley Coast, with mountains and national parks to the west and flood plains, wetlands and sensitive estuaries along the east coast. The Macleay River bisects the Shire, rising in the rural hinterland and enters the South Pacific ocean north of South West Rocks. The area is well known for tourism, with coastal towns and villages such as South West Rocks, Hat Head, Crescent Head and Stuarts Point proving very popular during holidays, with easy access to beaches and coastal waters.

The area has a sustained growth rate and due to the wonderful environment attracts a significant number of tourists each year. The Pacific Highway and North Coast Railway Line pass through the Macleay Valley, providing good access to the north and south.

This report provides a population profile for the MACLEAY VALLEY COAST with comparisons to State and Regional trends.



The focus however is on growth rates across the Shire, and trends within characteristics such as age, income/employment, households and education. The Shire is then further analysed in local areas with snapshots of specific data.

The Australian Bureau of Statistics (ABS) recorded a total population of 26,934 for the Kempsey Shire in the 2001 Census. This figure is based on the Basic Community Profile, the actual number of people in the Shire on census night and excludes overseas visitors. ■

“
*Kempsey
 Shire is
 known as the
 Macleay
 Valley Coast*
 ”



Contents

CONTENTS

SUMMARY	4
1. State Wide Trends	5
Population Growth	5
Age	5
Income	5
Employment	5
Ethnicity	5
2. Regional Trends	6
Population Growth	7
Age	8
Income	8
Employment	8
Ethnicity	8
Population Projections	8
3. The Local Scene	9
Population Growth	9
Population Projections	9
Age	10
Income	12
Employment / Occupation	14
Unemployment	16
Ethnicity	18
Dwellings	19
Households	21
Mortgage Payments	22
Education	24
4. Locality Profile	25
Population Growth by Locality	25
Stuarts Point	26
South West Rocks	27
Hat Head	28
Crescent Head	29
Smithtown & Gladstone	30
Frederickton	31
Kempsey	32
Coastal Rural	33
Central Rural	34
Inland Rural	35
5. Appendix 1 - Locality Boundaries	36
Appendix 2 - Selected tables from 2001 Census	37
6. References	45

Summary

SUMMARY

The Kempsey Population Profile 2005 has primarily been prepared from the 1991, 1996 and 2001 ABS census.

Section 1 of this report looks at trends in NSW, whilst section 2 focuses on trends in the region and section 3 looks at trends within the Kempsey Shire. Each section contains a snapshot of specific demographic information.

The table below contains a summary of population data for the Kempsey Shire in 1991, 1996 and 2001.

Section 4 of the report separates the Kempsey Shire into 10 localities, with a snapshot and analysis of specific information for each locality.

The most important findings of the Kempsey Shire Council Population Profile 2005 are the following:

- The population of the Kempsey Shire increased by 10,863 people from 1971 to 2001. The average rate of growth has declined from over 2% per annum from 1971 to 1986, to 1% per annum from 1986 to 2001.
- The Kempsey Shire has experienced a steady decline in people younger than 39 years old and a steady increase in people older than 40 years of age.
- The proportion of residents in the Macleay that only speak English at home is a high 94.6% (2001 Census) compared to 75.7% (2001 Census) for NSW.
- The proportion of people of Indigenous Origin (Aboriginal and Torres Strait Islanders) in the Kempsey Shire is 8.5% (2001 Census), higher than 1.9% for NSW.
- Over the past 10 years in the Macleay there has been a steady decline in the proportion of workers employed in agriculture, forestry, fishing, manufacturing and infrastructure services.
- Unemployment in 2001 for the Kempsey Shire at 16.5% is significantly higher than the Mid North Coast (13.2%) and NSW (7.2%), with rates significantly higher for men (64.5%) than for women (35.5%).
- Household incomes in the Shire are relatively low, with 46% of households earning less than \$500 per week in 2001, compared to 28% for the Mid North Coast and 29% for NSW.
- The total number of private dwellings in the Kempsey Shire increased from 10,436 in 1991 to 12,097 in 2001, an average growth rate of approximately 1.5% per annum.
- Separate housing is the most common form of housing in the Kempsey Shire (2001 Census), with the proportion of separate housing higher for Kempsey at 74.1% compared to 69.5% for the Mid North Coast and 64.1% for NSW.
- The proportion of people in the Kempsey Shire that actually own their dwellings (49.7%) is much higher than NSW (41.1%).
- Less than 1% of people in the Kempsey Shire (2001 Census) hold post graduate degrees, compared to 1% for the Mid North Coast and 2% for NSW. ■

Summary - Kempsey Shire Statistics

	1991	1996	2001
Total population	25,375	26,468	26,934
Annual Growth Rates (%)	1.9%	0.86%	0.35%
Median Age (years)	34	37	40
Median weekly individual income	\$160 - \$199	\$160 - \$199	\$200 - \$299
Median weekly household income	\$300 - \$399	\$400 - \$499	\$400 - \$499
Unemployment rate %	22.4	19.6	16.5
Mean household size	2.7	2.6	2.5 persons

Source: Table T22, 2001 Census, Table B32, 1996 Census & Table B33, 2001 Census

Table 1
Snapshot – NSW – 2001 Census

Median Age (years)	35
Median monthly housing loan repayments	\$1,000 - \$1,199
Median weekly rent	\$150 - \$199
Median weekly individual income	\$300 - \$399
Median weekly family income	\$800 - \$999
Median weekly household income	\$800 - \$999
Mean household size	2.6 persons

Note: Excludes overseas visitors

Population Growth

The total number of people in NSW on census night in 2001 was 6,371,745, an increase of 333,049 people or 5.5% since the 1996 census.¹ In 2001 the population of NSW increased by 639,713 people or 11.2% since the 1991 census, an average annual growth rate of 1.1%.

In the 2001 census 1,509,426 occupied private dwellings were either fully owned or in the process of being purchased. This represented 64.4% of all occupied private dwellings. A total of 645,319 occupied private dwellings or 27.5% were rented. In comparison to the 1991 census, 1,317,288 or 66.3% of occupied private dwellings were either fully owned or being purchased and 537,621 or 27.1% rented.

Occupancy rates or average household size has fallen from 2.7 persons per dwelling in the 1996 census to 2.6 persons in 2001.

Age

The median age of people in NSW in the 2001 census was 35 years, compared to the median age of 34 years in the 1996 census and 32 years in the 1991 census. In addition, 13% of the population in 2001 is 65 years and older, up from 12% in 1991.

Income

The median weekly individual income for people 15 years and older in the 2001 census was \$300 - \$399, compared to \$200 - \$299 in both the 1996 and 1991 census.

Employment

A total of 2,748,396 people or 92.8% of the labour force was employed in NSW at the time of the 2001 census. This compares to 2,558,875 people or 91.2% in 1996 and 2,398,916 people or 88.8% in 1991. The employed labour force rose 4% from 1991 – 2001.

A total of 213,196 people were unemployed in 2001, representing 7.2 % of the labour force, compared to 247,669 people or 8% in 1996 and 303,764 people or 11.2% in the 1991 census.

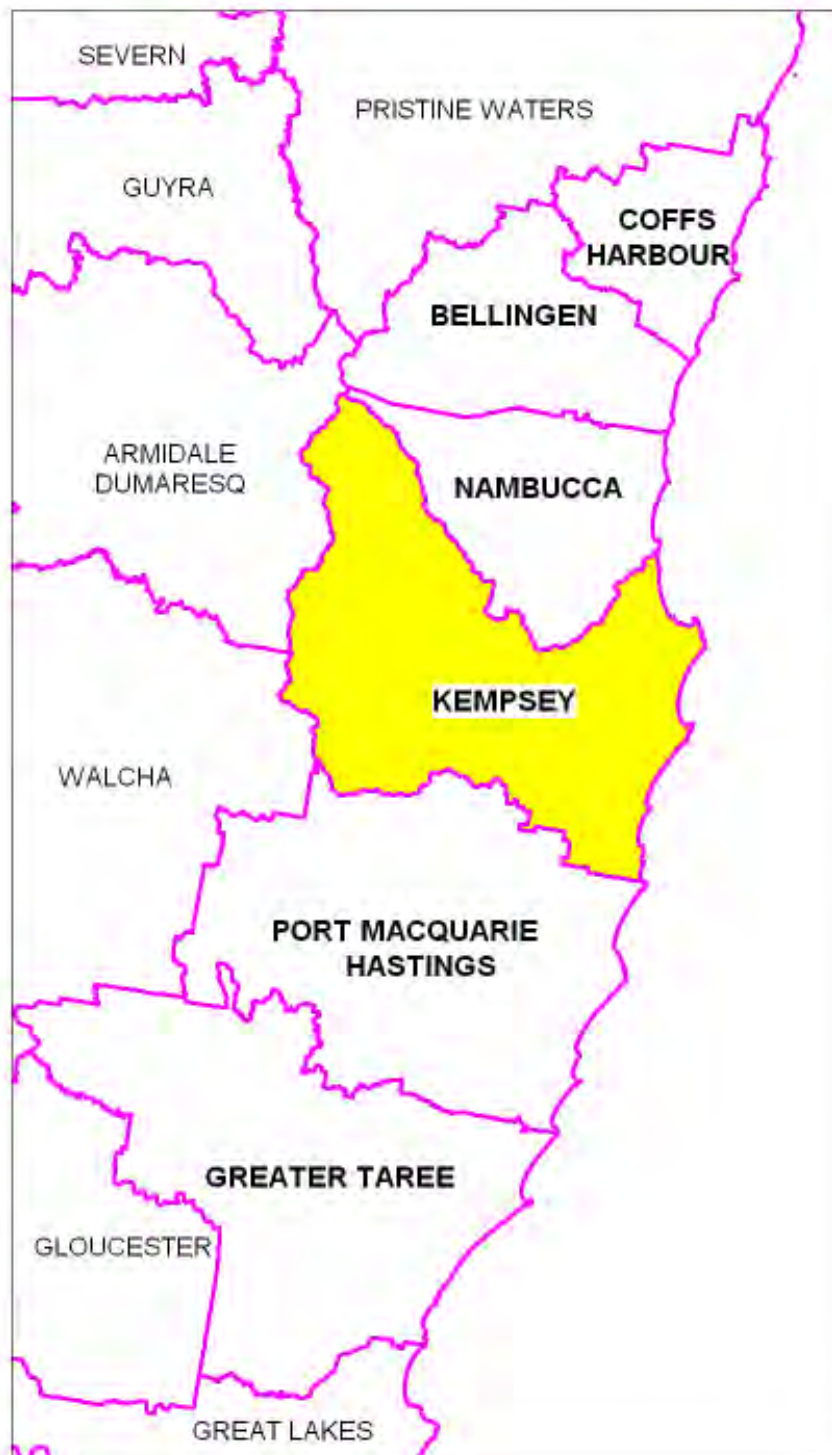
Ethnicity

A total of 70.5% or 4,450,770 people stated in the 2001 census that they were born in Australia, compared to 4,284,568 or 75.1% in the 1991 census. This represents a decline of 4.6% over the ten year period.

The total number of people of Indigenous origin in NSW in the 2001 census was 111,9865 or 1.9%, an increase of 49,866 people or 71.2% since 1991. The large increase is attributed to a higher birth rate than the population and a more willingness to be identified as an Aboriginal and or Torres Strait Islander. ■

¹ The total number of people in NSW on census night in 2001 includes overseas visitors.

The Mid North Coast region of NSW includes all coastal Local Government Areas from Coffs Harbour to Greater Taree.²



²The definition of the Mid North Coast region has been determined by the then Department of Planning NSW (Source: Mid North Coast Regional Profile, July 2003, prepared by the Hunter Valley Research Foundation, July 2003). More recently the Department of Infrastructure, Planning & Natural Resources (DIPNR) defines the Mid North Coast region (NSW Statistical Local Area Population Projections 2001 – 2031 - 2004 Release) as including 14 statistical local areas (SLAs), from Clarence Valley to Greater Taree.

The Australian Bureau of Statistics (ABS) refers to the Mid North Coast Statistical Division (SD) as including the Statistical Subdivisions of Coffs Harbour, Port Macquarie, Clarence (excluding Coffs Harbour) & Hastings (excluding Port Macquarie).

Table 2.1
Snapshot – Mid North Coast – 2001 Census

Median Age (years)	41 years
Median monthly housing loan repayments	\$600 - \$799
Median weekly rent	\$100 - \$149
Median weekly individual income	\$200 - \$299
Median weekly family income	\$600 - \$699
Median weekly household income	\$500 - \$599
Mean household size	2.5 persons

Note: Excludes overseas visitors

Population Growth

Table 2.2 shows that the population of the Mid North Coast increased by 9.8% between 1991 and 1996, compared to 5.4% for NSW during the same period and 5.1% between 1996 and 2001. This represents a significant increase with consequences for the growth and development of towns throughout the region, in particular towns along the coast.

Kempsey Shire experienced a population growth rate of 4.3% between 1991 and 1996 and 1.9% between 1996 and 2001. Although less than the growth rate for the Mid North Coast and NSW, it still represents an important increase with a range of consequences for the Kempsey Shire.

The growth rates are in fact the third highest in the Mid North Coast behind Port Macquarie - Hastings and Coffs Harbour..

Although the total population of the Kempsey Shire in 2001 was 26,934, less than for Coffs Harbour, Port Macquarie - Hastings and Greater Taree, the growth rates are higher than Greater Taree, Nambucca and Bellingen from 1996 to 2001.

Table 2.2
Mid North Coast Growth Rates

	Population 1991	Population 1996	Growth rate between 1991-1996	Population 2001	Growth rate between 1996-2001
Local Government Area					
Bellingen	11,651	12,253	5.2%	12,208	-0.4%
Coffs Harbour	51,520	58,337	13.2%	62,902	7.8%
Greater Taree	40,519	42,410	4.7%	42,943	1.3%
Hastings	50,058	58,010	15.9%	64,483	11.2%
Kempsey	25,343	26,430	4.3%	26,934	1.9%
Nambucca	16,691	17,610	5.5%	17,718	0.6%
Mid North Coast	195,782	215,050	9.8%	225,921	5.1%

Source: Coffs Harbour City Population Profile 2004 & ABS Census 1991, 1996 & 2001³

³ Includes overseas visitors

Age

From Table 2.3 the Mid North Coast has the higher percentage of people 65 years and older (17%), compared with NSW (10%), and Sydney (9%) with the lowest percentage. The Macleay and Mid North Coast regions are becoming favourite destinations for retirees for the lifestyle offered compared to Sydney.

The Mid North Coast Regional Population Profile prepared by the Hunter Foundation, in July 2003, confirms the above trends, i.e. the aging population and declining proportion of younger people in the Mid North Coast Region in comparison to NSW. These trends have implications for the provision of health services for the aged and availability of land for housing.

In general, the population of Australia is aging because of a lower mortality rate and so called baby boomers who were born after the second World War, now reaching the 45 + age group. In addition, the proportion of people 65 years and older is increasing because birth rates have declined, with numerically fewer younger people in the community.

Table 2.3
Population by Age

	0-14	15-24	25-44	45-64	65+	Total
Macleay	6,063	2,780	6,344	7,150	4,489	26,826
Mid North Coast	58,518	28,591	65,026	70,827	39,385	262,347
Sydney	798,826	551,226	1,252,005	876,782	347,808	3,826,647
NSW	1,313,350	845,345	1,880,360	1,443,638	622,950	6,105,643
	0-14	15-24	25-44	45-64	65+	
Macleay	23%	10%	24%	27%	17%	
Mid North Coast	22%	11%	25%	27%	15%	
Sydney	21%	14%	33%	23%	9%	
NSW	22%	14%	31%	24%	10%	

Source ABS 2001 Census

Note: Figures exclude overseas visitors & Mid North Coast ABS Statistical Division (SD)

Income

According to the Mid North Coast Population Profile, July 2003, the Mid North Coast has a higher proportion of people in the lower income band between \$120 and \$199 per week and a lower proportion of people in the higher income bands of more than \$600 per week, when compared to NSW. The median weekly individual income for the Mid North Coast is \$200 - \$299 compared to \$300 - \$399 per week for the State. The fact that residents in the Mid North Coast earn less than the rest of NSW suggests that there may be a need for greater State housing assistance in particular areas of the region.

Employment

The Mid North Coast Population Profile, July 2003, states that the number of people employed in the Mid North Coast of NSW increased by more than 12,000 since 1991 to 76,017 people in 2001. This represents an increase between 1991 and 2001 of approximately 20%.

There has been a shift in the employment sector, with more than 84% of employment in 2001 being in the tertiary sector compared to 75% in 1991. In 2001 only 8% of the work force was employed in the secondary sector and 6% in the primary sector. In addition, the Mid North Coast Population Profile, July 2003 report, shows a shift to part time work for all age groups

The Mid North Coast Population Profile (Hunter Valley Research Foundation July 2003) states that unemployment, for all age groups, in comparison to Sydney and NSW is relatively high, but dropped from 18% in 1991 to 13% in 2001. The unemployment rate for young people between 15 and 24 years is significantly higher for the Mid North Coast than for Sydney or NSW.

Ethnicity

Based on the 2001 Census, 86% of residents in the Mid North Coast (ABS Statistical Division instead of DIPNR) are born in Australia, compared to 62% for Sydney and 70% for NSW. In other words the Mid North Coast has a lower level of ethnic diversity than Sydney and NSW. Countries of origin for people born outside Australia in the Mid North Coast mainly include Germany, the Netherlands, New Zealand and the United Kingdom.

With regards to Aboriginal and Torres Strait Islander (Indigenous) people, 4% of the Mid North Coast population identified themselves as being Aboriginal or Torres Strait Islanders, compared to 2% for NSW and 1% for Sydney. Since 1991, the percentage of the Mid North Coast population comprising Aboriginal and Torres Strait Islanders rose from 2% in 1991 to 3% in 2001. The

increase in Indigenous people in the region can be attributed to factors such as residents willing to identify themselves as Aboriginal or Torres Strait Islander and a rise in Indigenous birth rates.

Population Projections

Regional population projections are shown in Table 2.4 from 2001 to 2031 with an average annual growth rate of 0.9% for the Mid North Coast from 2001 to 2031. The projected growth rate for Kempsey is only 0.2% per annum.

Projected average annual growth rates are highest for Hastings and Coffs Harbour, where larger coastal cities are included. Significant population growth from 2001 to 2031 is expected along the coast and the reason for this is people being attracted to coastal centres, lifestyle and mild climate. ■

Table 2.4
Regional Population Projections 1991 - 2016

Statistical Local Area (SLA)	Population		Av Annual Growth%
	2001	2031	
Bellingen	12,730	13,730	0.3
Coffs Harbour -Part A	46,100	71,710	1.5
Coffs Harbour -Part B	15,650	20,100	0.8
Greater Taree	44,740	47,460	0.2
Hastings - Part A	38,130	63,210	1.7
Hastings - Part B	27,250	38,630	1.2
Kempsey	27,370	29,070	0.2
Nambucca	18,170	19,850	0.3
Mid-North Coast	280,600	363,750	0.9

Source: Adopted from NSW Statistical Local Area Population Projections 2001- 2031, 2004 Release – Department of Infrastructure & Natural Resources, Transport & Population Data Centre

Table 3.1
Snapshot – Kempsey Shire – 2001 Census

Median Age (years)	40
Median monthly housing loan repayments	\$600 - \$799
Median weekly rent	\$100 - \$149
Median weekly individual income	\$200 - \$299
Median weekly family income	\$500 - \$599
Median weekly household income	\$400 - \$499
Mean household size	2.5 persons

Source: ABS 2001 Census (Excludes overseas visitors)

Population Growth

Table 3.1 shows that the population of the Kempsey Shire increased by 10,863 people from 1971 to 2001, at an average rate of 2.8% per annum until 1986 and then declined to 1.1% per annum until 2001.

The Estimated Residential Population (ERP) for the Kempsey Shire determined by the then Planning NSW Department for 2001 was 27,700. This information was based on ABS census data which has been adjusted to include people who live in Australia but were not counted on census night. It also includes Australian residents who were overseas at the time and excludes overseas visitors. The estimated figure of 27,700 for 2001 is higher than the actual figure of 26,934 (Basic Community Profiles) where overseas visitors have been included. On census night a number of residents were away from their normal place of residence, either in or outside Australia, therefore accounting for the difference of approximately 766 people.

Table 3.2
Population Growth Rates Kempsey Shire, from 1971 - 2001

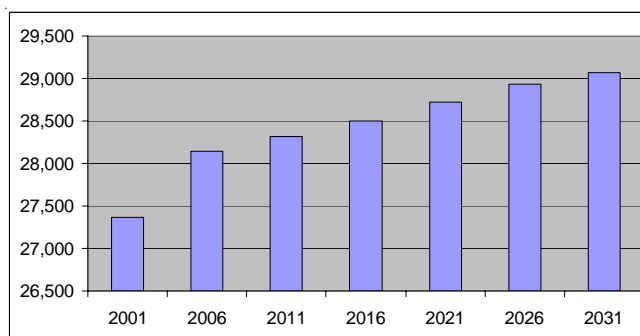
Year	Census	Growth Rates	Estimated Residential Population
1971	16,017	-	-
1976	17,041	6.1 %	17,400
1981	19,582	14.1%	19,600
1986	22,900	16.9%	22,800
1991	25,375	10.8%	25,400
1996	26,468	4.3%	26,500
2001	26,934	1.7%	27,700

Source: Planning NSW & ABS Census – UCL Data

Population Projections

From Figure 2 the population of the Kempsey Shire is predicted to grow at a steady rate from 2001 to 2031. Population growth is expected to rise over the next decades as the area attracts retirees and others wishing to relocate from Sydney and other larger urban centres. The coastal town of South West Rocks is expected to experience rapid population growth.

Figure 1
Projected population, Kempsey (A), 2001 - 2031



Source: DIPNR, NSW SLA Population Projections, 2004 Release

Age

Table 3.3 shows the age distribution from 1991 to 2001 for the Kempsey Shire, with a steady decline in the percentage of people younger than 39 years old and a steady increase in the percentage of people older than 40 years. These trends are confirmed in Figure 3 where the Kempsey Shire and Mid North Coast has a much higher percentage of people older than 45 years than NSW.

Map 1 shows the distribution of people 55 years and older for localities throughout the Shire, confirming the rise in the proportion of older residents.

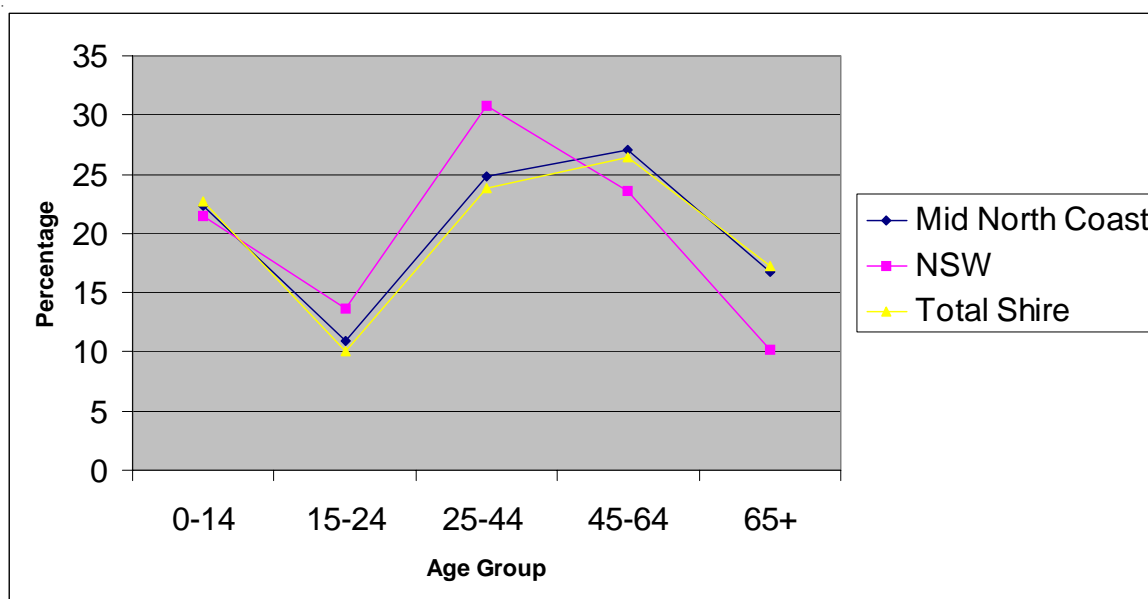
As expected the percentage of people younger than 44 years old is lower for both the Kempsey Shire and Mid North Coast than NSW. This is likely to be the result of a number of factors including an influx of retirees from Sydney, an aging population because of the baby boomers, lower birth rates and a higher percentage of younger people moving out of the Shire to major centres such as Sydney.

Table 3.3
Age Distribution of Kempsey Shire 1991 - 2001

	1991 Census	1996 Census	2001 Census	1991 - 2001 Change
0-4	2117	2019	1781	-16%
5-9	2195	2182	2086	-5%
10-14	2033	2148	2205	8%
15-19	1723	1624	1753	2%
20-24	1172	1169	1037	-12%
25-29	1575	1322	1181	-25%
30-34	1962	1744	1384	-29%
35-39	1944	2065	1760	-9%
40-44	1775	1973	2057	16%
45-49	1411	1820	1991	41%
50-54	1294	1460	1931	49%
55-59	1245	1456	1653	33%
60-64	1372	1380	1572	15%
65-69	1350	1319	1354	0%
70-74	963	1202	1207	25%
75-79	634	734	1002	58%
80-84	354	427	561	58%
85-89	151	229	250	66%
90 years plus	43	87	122	184%
TOTALS	25313	26360	26887	

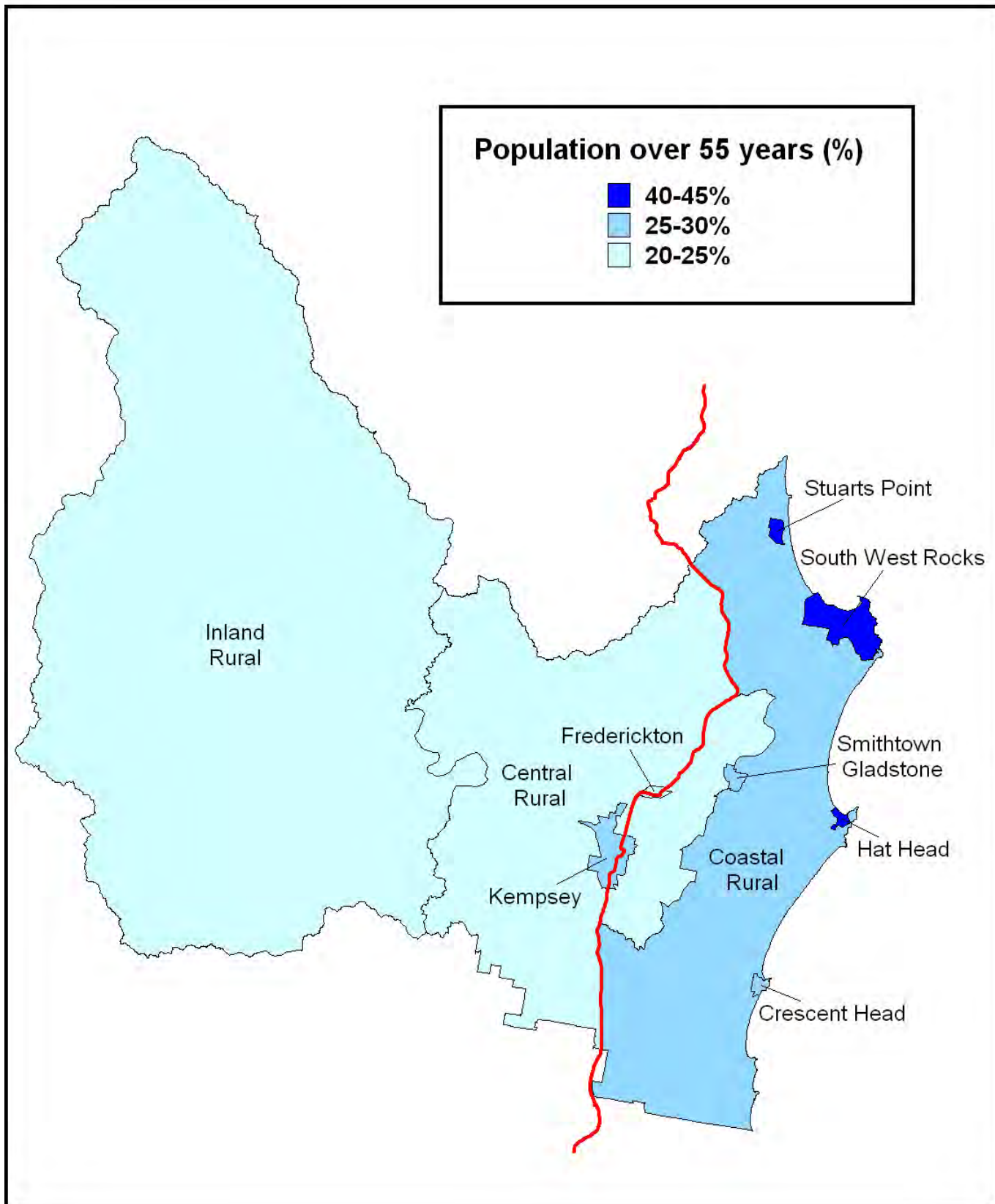
Source: Table T02, 2001 ABS Census⁵

Figure 2
Age Distribution – Mid North Coast, NSW & Total Shire



⁵ Total figures exclude overseas visitors

MAP 1 – AGEING POPULATION KEMPSEY SHIRE
% of population over 55 years (by locality)



Localities are based on ABS Census Collector Districts
Source: ABS 2001 Census
Produced by: Kempsey Shire Council

Income

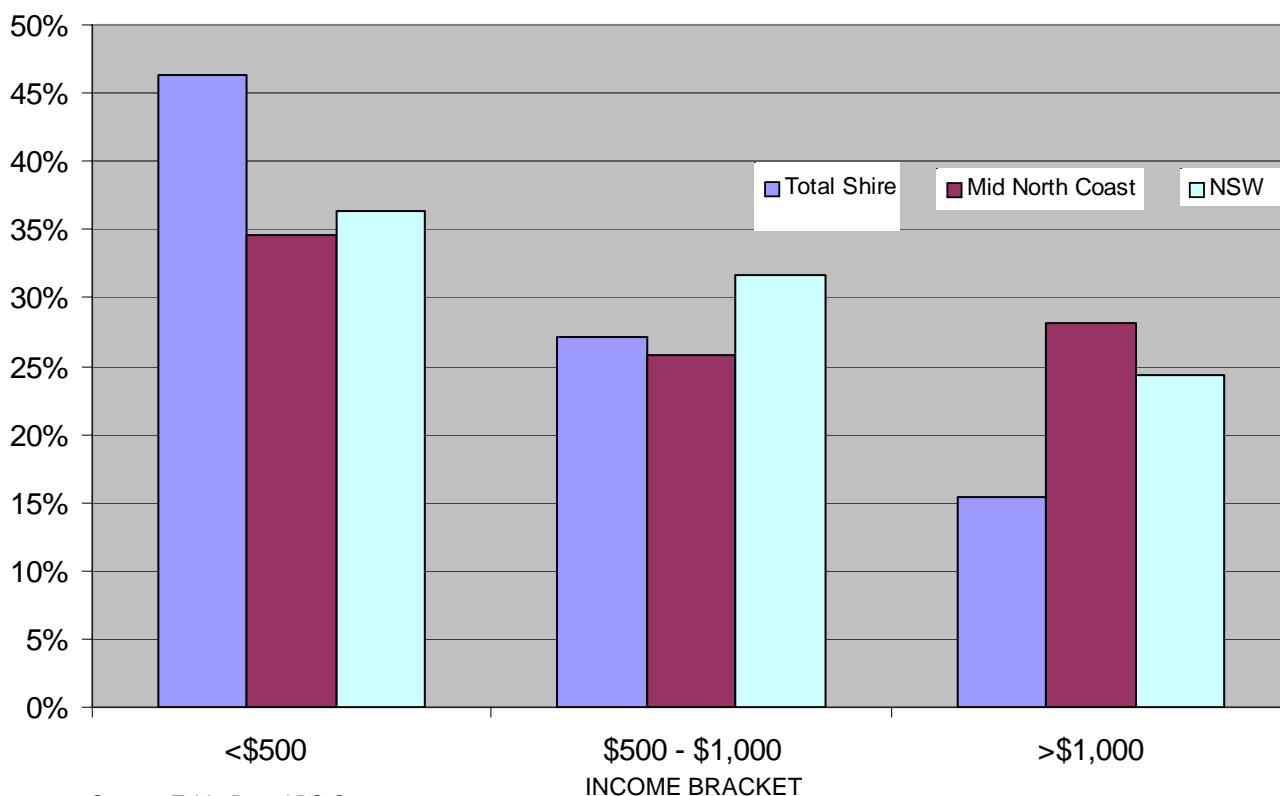
Figure 4 shows the weekly income for residents in the Kempsey Shire, the Mid North Coast and NSW in 2001. The percentage of households with weekly income levels less than \$500 is higher in the Kempsey Shire than the Mid North Coast and NSW.

From Table B31 at Appendix 2, it is apparent that 46% of households in the Shire earned less than \$500 per week in 2001. This compares to 28% for the Mid North Coast and 29% for NSW.

Map 2 shows the distribution of households that earn more than \$500 a week in the Shire. Crescent Head has the highest proportion of these households.

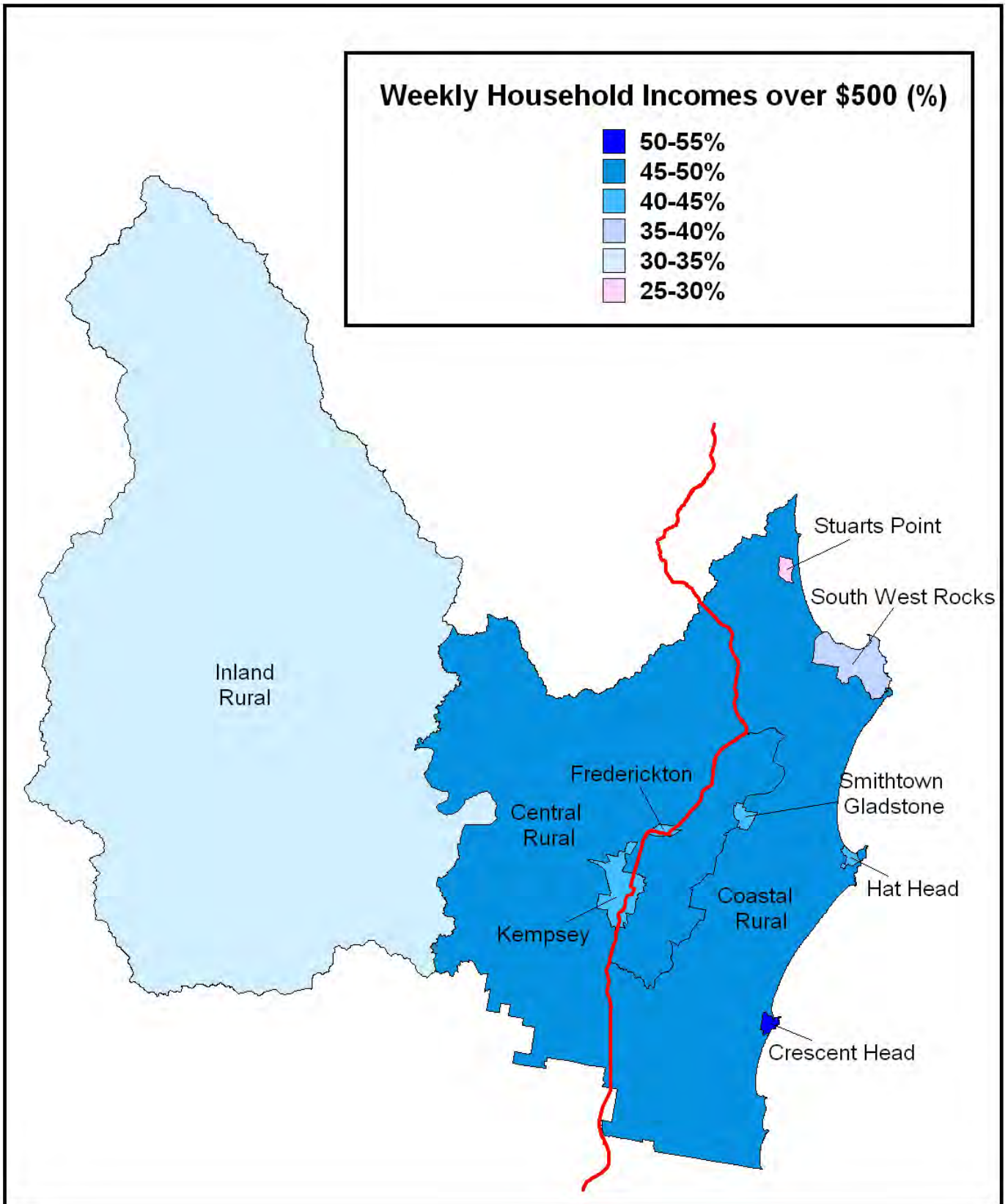
With regards to weekly income for family households versus non-family households in the Kempsey Shire, 34% of family households earned income less than \$500 a week compared to 72% of non-family households. The percentage of family households earning more than \$500 a week is higher for family households than for non-family households.

Figure 3
Weekly Household Income
Kempsey Shire, Mid North Coast & NSW



Source: Table B31, ABS Census

MAP 2 – WEEKLY HOUSEHOLD INCOME
% of Households with weekly income over \$500 (by locality)



Localities are based on ABS Census Collector Districts
 Source: ABS 2001 Census
 Produced by: Kempsey Shire Council

Employment/Occupation

From Table 3.4, the largest employers in the Kempsey Shire are wholesale and retail trade, education, health and community services, employing 43.1% of the total workforce. This figure is similar to those for NSW where 45% are employed in service industries.

Over the past 10 years there has been a steady decline in the proportion of workers employed in agriculture, mining, manufacturing, electricity, gas and water supply (Table 3.5). Construction, trade, transportation, education, health & other services have been growth industries in the Kempsey Shire from 1991 to 2001.

From Figure 5, employment in all sectors in 2001 for the Kempsey Shire are similar to the Mid North Coast across all sectors, with a higher proportion employed in retail trade and health compared to NSW.

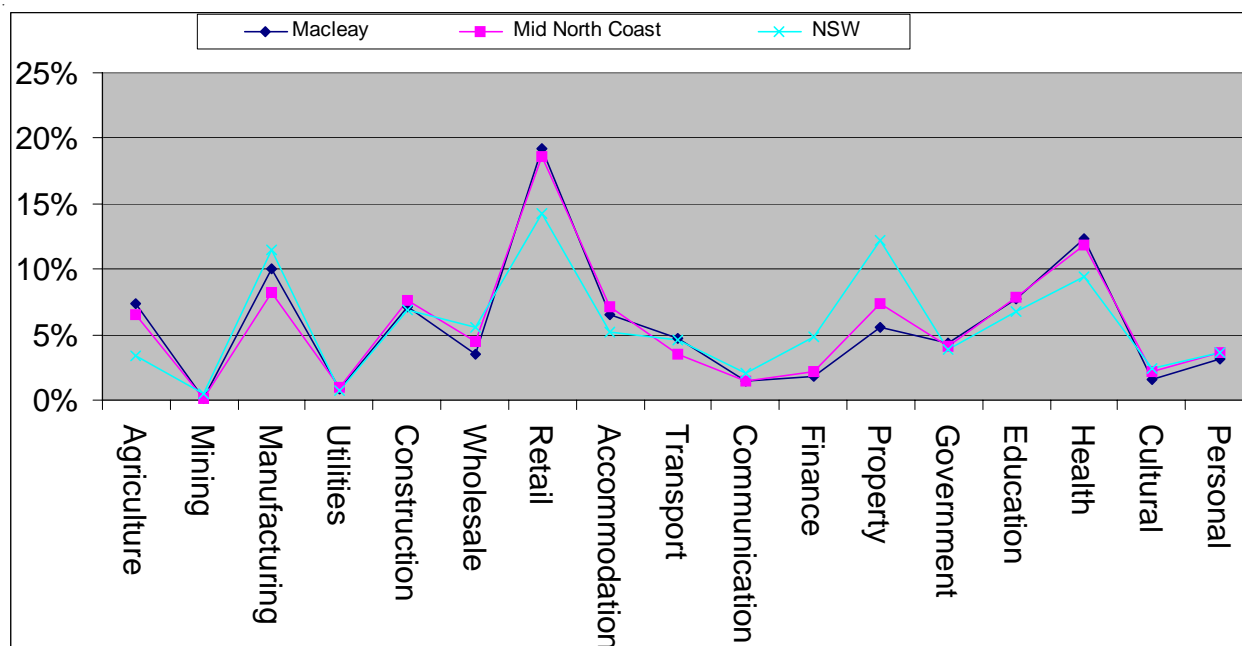
From Table 3.4, males dominate the workforce employed in the agriculture, forestry, fishing industry, manufacturing and construction. Females dominate the workforce in Education (11.7%) and Health and community services sectors (21.2%).

Table 3.4 - Industry by age

Industry Classification	Male Prop(%)		Female Prop(%)		Total
Agriculture, Forestry & Fishing	462	10.1%	160	4.2%	622
Mining	9	0.2%	0	0.0%	9
Manufacturing	630	13.8%	173	4.5%	803
Electricity, Gas & Water Supply	55	1.2%	14	0.4%	69
Construction	539	11.8%	71	1.8%	610
Wholesale Trade	225	4.9%	80	2.1%	305
Retail Trade	729	16.0%	882	22.9%	1,611
Accommodation, Cafes & Restaurants	212	4.7%	314	8.2%	526
Transport & Storage	300	6.6%	79	2.1%	379
Communication Services	79	1.7%	66	1.7%	145
Finance & Insurance	41	0.9%	106	2.8%	147
Property & Business Services	238	5.2%	244	6.3%	482
Government Admin. & Defence	230	5.1%	138	3.6%	368
Education	221	4.9%	450	11.7%	671
Health & Community Services	220	4.8%	815	21.2%	1,035
Cultural & Recreational Services	73	1.6%	55	1.4%	128
Personal & Other Services	169	3.7%	115	3.0%	284
Non-classifiable economic units	19	0.4%	17	0.4%	36
Not stated	103	2.3%	66	1.7%	169
Total	4554	100.0%	3845	100.0%	8399

Source: Table B26 Industry by Age by Sex 2001 ABS Census

Figure 4⁶
Percentage Employed in Industry Groups 2001



⁶Industry classifications have been grouped into broad categories given that the 1991 census had a wider range of classifications than both the 1996 and 2002 census.

Table 3.5
Occupation by Industry – Kempsey Shire – 1991 – 2001

Industry Classification	1991 Census	Prop(%)	1996 Census	Prop(%)	2001 Census	Prop(%)	%Change over 10 years
Agriculture, Forestry & Fishing	701	9.1%	682	8.4%	622	7.4%	-11.3%
Mining	14	0.2%	24	0.3%	9	0.1%	-35.7%
Manufacturing	992	12.9%	916	11.3%	803	9.6%	-19.1%
Electricity, Gas & Water Supply	122	1.6%	115	1.4%	69	0.8%	-43.4%
Construction	513	6.7%	578	7.1%	610	7.3%	18.9%
Wholesale & Retail Trade	1,498	19.5%	1640	20.3%	1,916	22.8%	27.9%
Transport & Storage	278	3.6%	307	3.8%	379	4.5%	36.3%
Communication, Finance, Insurance, Property & Business Services	734	9.6%	818	10.1%	774	9.2%	5.4%
Government, Administration & Defence	331	4.3%	349	4.3%	368	4.4%	11.2%
Education, Health & Community Services	1,373	17.9%	1602	19.8%	1,706	20.3%	24.3%
Recreational, Personal Cultural & other Services including Accommodation, Restaurants & Cafes	594	7.7%	872	10.8%	938	11.2%	57.9%
Non classified	11	0.1%	39	0.5%	36	0.4%	227.3%
Not stated	525	6.8%	156	1.9%	169	2.0%	67.8%
Total	7686	100%	8098	100%	8399	100.0%	

Source: 1991, 1996 & 2001 Census

Unemployment

Table 3.6 shows the number and percentage of employed and unemployed people in the Kempsey Shire, in comparison to the Mid North Coast and NSW.

From Table 3.6, 16.5% of people were unemployed in the Kempsey Shire in 2001, as compared to 22.4% in the 1991 census. This represents a decrease of 5.9% over a ten year period. Nevertheless the percentage of unemployed in 2001 for the Kempsey Shire is significantly higher than the Mid North Coast (13.2%) and NSW (7.2%). Map 2 shows the unemployment rate in localities throughout the Shire.

Unemployment according to the 2001 Census in the Kempsey Shire is significantly higher for men (64.5%) than for women (35.5%) and the percentage of men working full time is 64.5% compared to 35.5% for women. Full time employment is defined in the Census as being 35 hours or more for all jobs per week. If compared to the Mid North Coast and NSW the percentage of part time workers in the Kempsey Shire is 34.1% compared to 29% for NSW. More females work part time than men.

The higher rate of unemployment and proportion of part time work in the Kempsey Shire has financial implications such as the ability to purchase a home, white goods, vehicles etc, reducing retail sales in Kempsey and reducing access to other services.

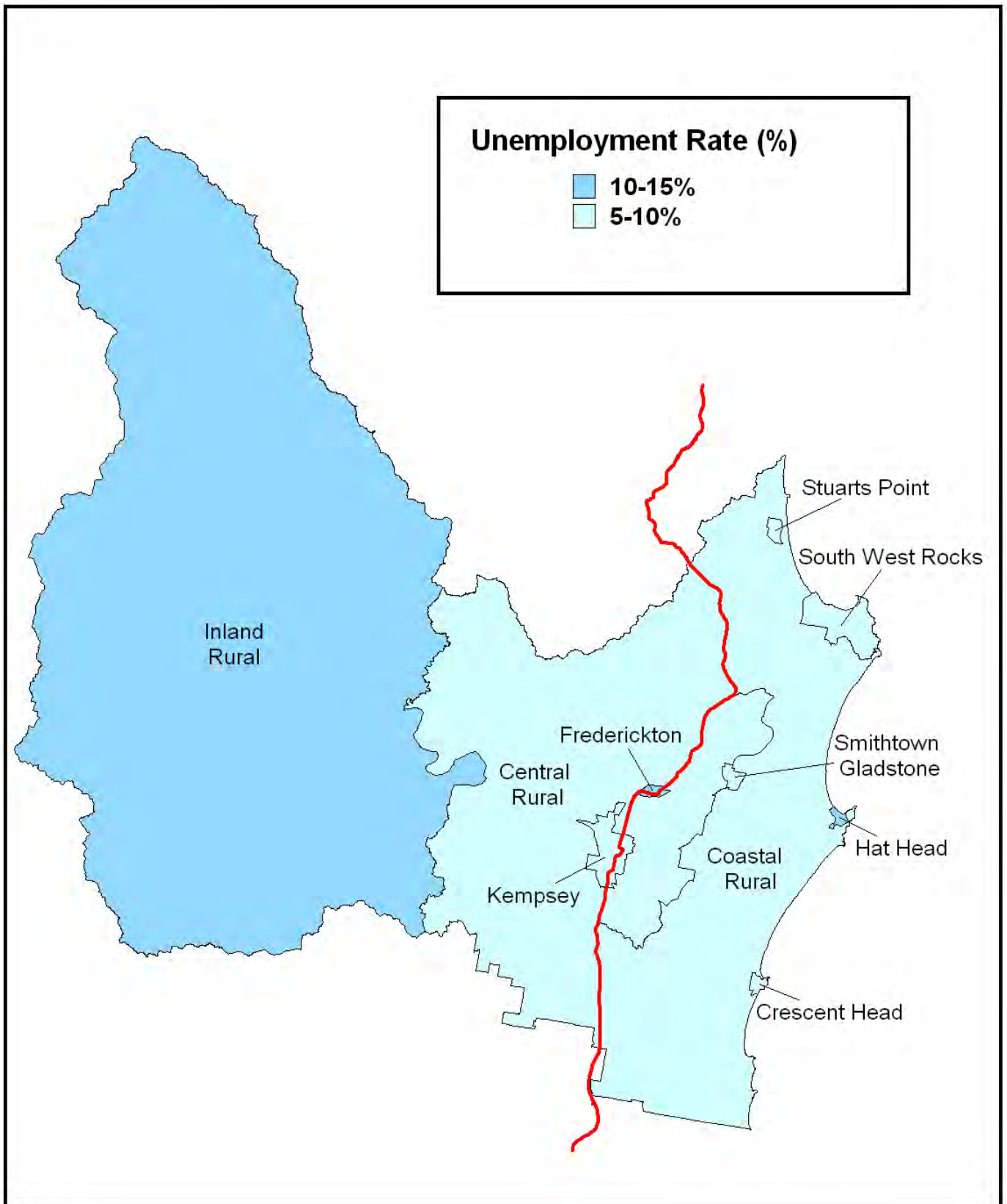
Map 3 shows the unemployment rate across the Shire.

Table 3.6
Labour Force Status Kempsey Shire 2001⁸

	KEMPSEY SHIRE		MID NORTH COAST		NSW	
	No.	%	No.	%	No.	%
Employed:						
Employed working full time	4,677	46.5%	43,159	49.1%	1,805,433	61.0%
Employed working part time	3,433	34.1%	30,857	35.1%	858,483	29.0%
Not stated	286	2.8%	2,319	2.6%	84,480	2.9%
Total employed	8,396	83.5%	76,335	86.8%	2,748,396	92.8%
Unemployed:						
Looking for full time work	1,274	12.7%	8,743	9.9%	152,074	5.1%
Looking for part time work	387	3.8%	2,855	3.2%	61,122	2.1%
Total unemployed	1,661	16.5%	11,598	13.2%	213,196	7.2%
Total in labour force	10,057	48.3%	87,933	49.4%	2,961,592	59.3%
Not in labour force	10,026	48.2%	83,702	47.0%	1,799,540	36.0%
Not stated	728	3.5%	6,376	3.6%	236,686	4.7%
Total	20,811	100.0%	178,011	100.0%	4,997,818	100.0%

⁸ Applies to persons 15 years and older, excludes persons less than 5 years & includes person who did not state their hours worked. Full time refers to working 35 hours or more a week prior to Census night.

MAP 3 – UNEMPLOYMENT IN THE KEMPSEY SHIRE
% of Labour Force Unemployed (by locality)



Localities are based on ABS Census Collector Districts
Source: ABS 2001 Census
Produced by: Kempsey Shire Council

Ethnicity

According to the 2001 Census, 88.2% of people in the Kempsey Shire stated that they were born in Australia. This is down from 89.7% in the 1996 census and 91.8% in the 1991 census. The number of people born outside Australia, but living in the Kempsey Shire is slowly increasing, consistent with trends in NSW, although not as pronounced. According to the 2001 ABS Census, 29.5% of people were born outside Australia, up from 24.9% in the 1991 Census, indicating increased ethnicity.

Countries of origin for people born outside Australia for the Kempsey Shire in the 2001 census include the United Kingdom (3.1%), New Zealand (0.7%) and Germany (0.4%).

A total of 94.6% of people in the 2001 Census only spoke English at home compared to 96.6% in the 1991 Census. This is much higher than the figures for NSW where 75.7% only spoke English in the 2001 Census, down from 80.3% in the 1991 Census.

The proportion of people of Indigenous Origin (Aboriginal and Torres Strait Islanders) in the Kempsey Shire increased from 5.2% in the 1991 Census to 8.5% in the 2001 Census. This represents a much higher figure than the 1.9% for NSW in the 2001 Census.

According to the Mid North Coast Regional Profile report prepared by the Hunter Valley Research Foundation in July 2003, the reason for the higher proportion of Indigenous people in the Kempsey Shire than elsewhere in NSW is because of a higher birth rate than the rest of the population and residents more willing to identify themselves as Aboriginal or Torres Strait Islanders.

Kempsey has the highest proportion of Indigenous people in the Shire, flagging the need according to the Mid North Coast Regional Profile report for community services to be adjusted to meet the needs of the people.

Dwellings

The total number of private dwellings, including unoccupied private dwellings, in the Kempsey Shire increased from 10,436 in 1991 to 12,097 in 2001, a growth rate of approximately 1.3% per annum. This compares to 2,179,405 dwellings in 1991 and 2,571,540 in 2001 for NSW, with a growth rate of 1.5% per annum, slightly higher than the Kempsey Shire.

Table 3.7 lists the type of dwelling structures with the percentage of each category and compares the proportion of each category. The figures for the Kempsey Shire include 1991 and 2001, although particular statistics are not available for 1991 given different classifications used in the 1991 census. Nevertheless the 1991 census figures for the Kempsey Shire have been included rather than the 1996 figures to give a more accurate indication of overall growth rates.

Table 3.7 shows that separate housing is the most common form of housing in the Kempsey Shire, Mid North Coast and NSW, with the proportion of separate houses higher for Kempsey at 74.1% compared to 69.5% for the Mid North Coast and 64.1% for NSW.

As indicated, the percentage of flats, units or apartments of the total housing stock for the Kempsey Shire is only 5.1% compared to 8.5% for the Mid North Coast and 16.3% for NSW. It is expected that NSW would have a higher proportion of the population living in flats, units or apartments given the inclusion of data from Sydney and other major urban centres where flats, unit or apartment are a more common form of housing, especially inner city areas. The percentage of other housing including caravans is higher for both the Kempsey Shire and the Mid North Coast, 5.4% and 4.4% respectively, as compared to only 1.5% for NSW (2001).

Table 3.7
Dwelling Structure 1991 – 2001
Kempsey Shire, Mid North Coast & NSW

	KEMPSEY SHIRE				MID NORTH COAST		NSW	
	1991		2001		2001		2001	
	No.	%	No.	%	No.	%	No.	%
Separate House	7,692	73.7%	8,964	74.1%	69,343	69.5%	1,648,023	64.1%
Semi detached townhouse:								
1 storey			259	2.1%	4,885	4.9%	111,926	4.4%
2 storeys			87	0.7%	1,535	1.5%	106,070	4.1%
Total semi detached townhouse	239	2.3%	346	2.9%	6,420	6.4%	217,996	8.5%
Flat, unit or apartment:								
1 or 2 storey	439	4.2%	510	4.2%	6,165	6.2%	148,239	8.5%
3 storey	31	0.3%	69	0.6%	1,032	1.0%	135,741	5.3%
4 or more		0.0%	6	0.0%	910	0.9%	125,688	4.9%
Attached to a house	40	0.4%	29	0.2%	367	0.4%	8,705	0.3%
Total flat, unit or apartment	510	4.9%	614	5.1%	8,474	8.5%	418,373	16.3%
Other:								
Caravan	400	3.8%	388	3.2%	3,734	3.7%	26,094	1.0%
Improvised	68	0.7%	15	0.1%	159	0.2%	1,976	0.1%
Attached to a shop	73	0.7%	62	0.5%	485	0.5%	11,417	0.4%
Total Other	541	5.2%	465	3.8%	4,378	4.4%	39,487	1.5%
Not stated	34	0.3%	40	0.3%	687	0.7%	19,798	0.8%
Unoccupied private dwelling	1,420	13.6%	1,668	13.8%	10,352	10.4%	227,863	8.9%
Total	10,436	100.0%	12,097	100.0%	99,754	100.0%	2,571,540	100.0%

Source: Table B18 & T18, 2001 Census⁹

⁹ Excludes overseas visitors & "Manufactured Home Estates" & Accommodation for the Retired or Aged in 1991. Serviced apartments & persons living in serviced apartments have been included in 2001. These dwellings were non-private dwellings in 1991 & 1996.

Table 3.8 shows that most residents in both Kempsey and NSW own the dwellings they live in. There has been a slight decline in the Kempsey Shire of the percentage of fully owned dwellings, decreasing from 51.5% in 1991 to 49.7% in 2001. However, this is substantially higher than the figure for NSW, 41.1% in 2001. More people in the Kempsey Shire own their dwelling.

Table 3.8 provides information on occupancy for 1991 and 2001 for the Kempsey Shire and NSW. Figure 6 provides a snapshot of the different types of occupancy for Kempsey and NSW in 2001.

The proportion of the population in the Kempsey Shire (24.7%) that rent is slightly lower than for NSW (27.5%). It is likely that the difference is because housing is cheaper in the Kempsey area.

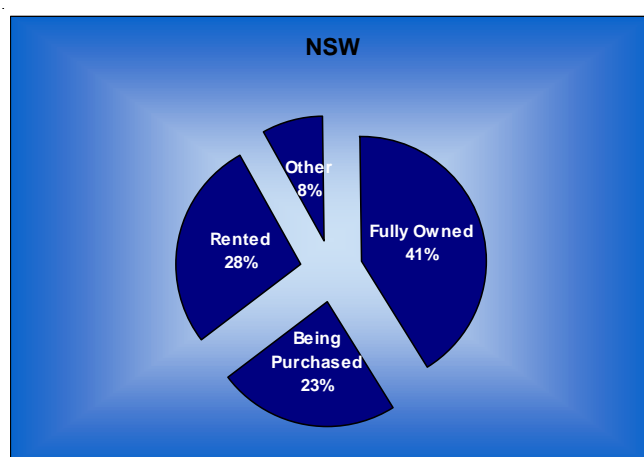
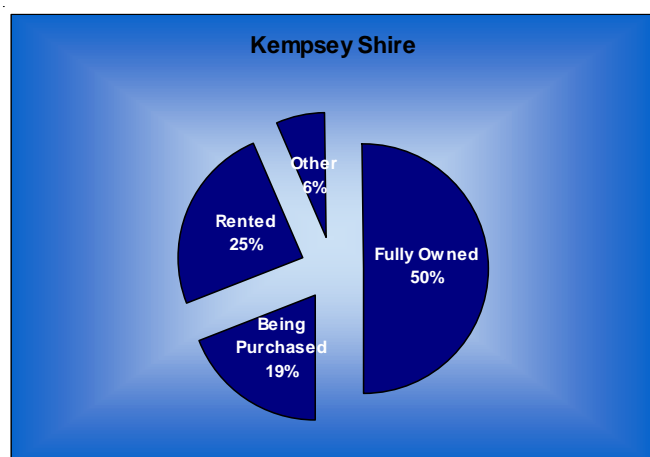
The occupancy rate (mean household size) for the Kempsey Shire in 2001 was 2.5 persons, slightly lower than 2.6 in 1996, which is a persistent trend. This results in more houses being required to house a growing population than would be required for a consistent occupancy rate.

Table 3.8
Nature of Occupancy - Kempsey Shire, NSW 1991 & 2001

	KEMPSEY SHIRE				MID NORTH COAST		NSW	
	1991		2001		2001		2001	
	No.	%	No.	%	No.	%	No.	%
Fully Owned	4,646	51.5%	5,177	49.7%	827,522	41.6%	963,231	41.1%
Being Purchased Under								
Rent / Buy Scheme	1,665	18.5%	1,991	19.1%	489,766	24.6%	546,195	23.3%
Rented	2,163	24.0%	2,570	24.7%	537,621	27.1%	645,319	27.5%
Other tenure type (eg rent free)	542	6.0%	674	6.5%	132,356	6.7%	188,932	8.1%
Total	9,016	100.0%	10,412	100.0%	1,987,265	100.0%	2,343,677	100%

Source: Table B19, 1991 & 2001 Census¹⁰

Figure 6
Nature of Occupancy
2001 Comparisons



¹⁰ Includes rented dwellings where the landlord type was not stated, includes dwellings being occupied rent free and dwellings where tenure type was not stated.

Households

Table 3.9 and Figure 5 provide information on a range of household types in the Kempsey Shire, the Mid North Coast and NSW.

In comparison to NSW, Kempsey Shire has a lower proportion of one family households, more couple families without children and more one parent families.

Figure 5
Household Type
Kempsey Shire, Mid North Coast & NSW

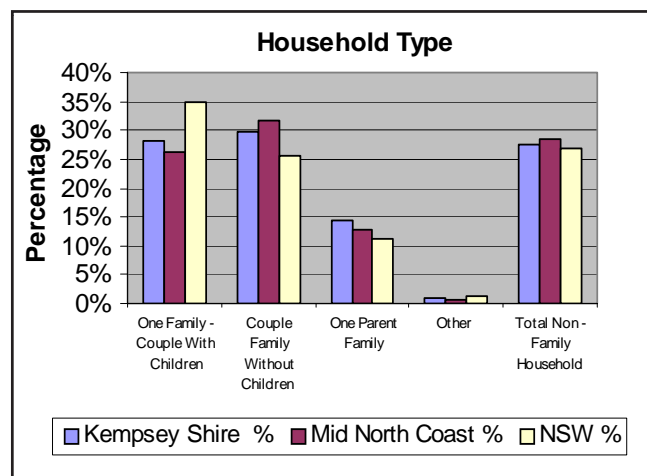


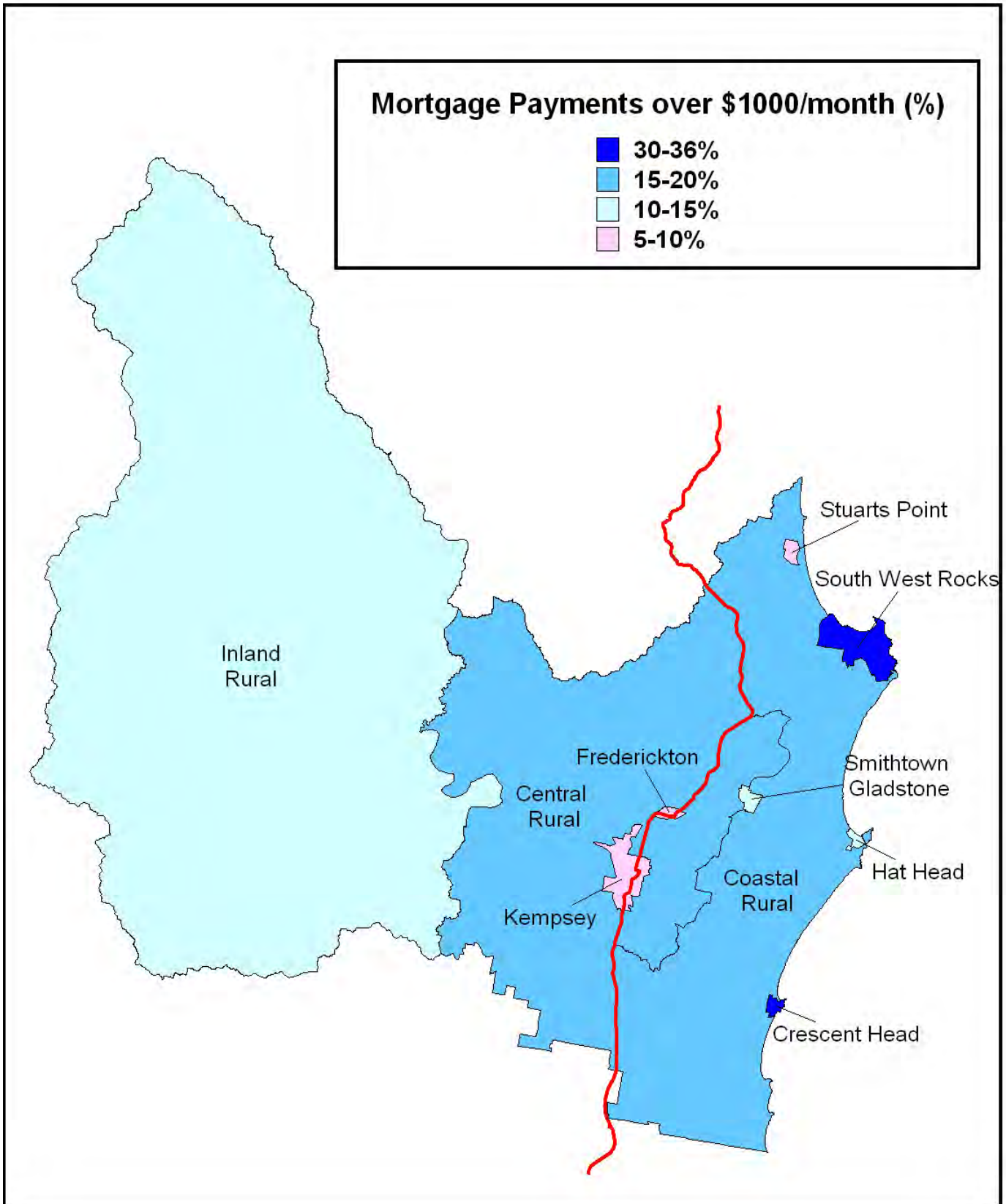
Table 3.9
Household Type
Kempsey Shire, Mid North Coast & NSW

	KEMPSEY SHIRE		MID NORTH COAST		NSW	
	No.	%	No.	%	No.	%
Family Type						
One Family - Couple With Children	2,782	28%	22,018	26.2%	791,475	35.0%
Couple Family Without Children	2,916	30%	26,725	31.8%	577,401	25.5%
One Parent Family	1,417	14%	10,631	12.7%	255,859	11.3%
Total Family Household	7,121	72%	59,374	70.7%	1,624,735	71.8%
Other	101	1%	667	0.8%	29,848	1.3%
Non - Family Household						
Lone Person Household	2,482	25%	21,680	25.8%	522,487	23.1%
Group Household	231	2%	2,307	2.7%	85,243	3.8%
Total Non - Family Household	2,713	28%	23,987	28.5%	607,730	26.9%
Total All Households	9,834	100%	84,028	100.0%	2,262,313	100.0%

Mortgage Payments

Map 4 shows the distribution of mortgage payments over \$1000 a month for occupied private dwellings being purchased in the Shire. South West Rocks has 33% and Crescent Head 36% of households paying more than \$1000 per month. Stuarts Point and Kempsey are the lowest at 5% and 10% respectively.

MAP 4 – MORTGAGE PAYMENTS
% of Households paying over \$1000 / Month
(by locality)



Localities are based on ABS Census Collector Districts
 Source: ABS 2001 Census
 Produced by: Kempsey Shire Council

Education

Table 3.10 shows the highest qualification obtained by residents in the Kempsey Shire, Mid North Coast and NSW.

The proportion of people from the Kempsey Shire with post graduate degrees is the lowest if compared to the Mid North Coast and NSW. The percentage of people with bachelor degrees, diplomas or certificates is slightly lower for the Kempsey Shire than the Mid North Coast and NSW.

Table 3.11 shows the attendance at educational institutions for people in the Kempsey Shire and NSW. The proportion of people attending educational institutions in the Kempsey Shire between 1996 and 2001 has been steady, with the 2001 rates similar to those of NSW in 2001. ■

¹¹Excludes schooling up to year 12, includes inadequately described & includes persons who do not have a qualification & persons who have a qualification outside of the scope of Australian Standards.

¹²Includes persons attending an educational institution, but does not differentiate between part time & full time study. Includes persons who did not state whether or not they were attending an educational institution.

Table 3.10
Highest Qualification Obtained
Kempsey Shire, Mid North Coast & NSW

	KEMPSEY SHIRE		MID NORTH COAST		NSW	
	No.	%	No.	%	No.	%
Postgraduate Degree	76	0%	1,168	1%	109,623	2%
Graduate Diploma & Graduate Certificate	164	1%	1,656	1%	60,950	1%
Bachelor Degree	870	4%	9,911	6%	506,806	10%
Advanced Diploma & Diploma	851	4%	9,266	5%	312,187	6%
Certificate	3,687	18%	33,252	19%	819,902	16%
Not stated	2,516	12%	21,170	12%	616,881	12%
Not applicable	12,651	61%	101,583	57%	2,571,469	51%
Total	20815	100%	178,006	100%	4,997,818	100%

Source: Table B23, 2001 Census¹¹ & Coffs Harbour Population Profile 2004

Table 3.11
Attendance at Educational Institutions
Kempsey Shire & NSW

	KEMPSEY SHIRE		MID NORTH COAST		NSW	
	No.	%	No.	%	No.	%
Preschool	478	2%	489	2%	99,614	2%
Infants/Primary	2,923	11%	2,784	10%	579,761	9%
Secondary	1,935	8%	2,041	8%	438,772	7%
Technical & Further Educational Institutions	653	3%	914	3%	188,943	3%
University or other Tertiary Institution	196	1%	232	1%	231,169	4%
Other	64	0%	144	1%	51,504	1%
Not attending	18,744	70%	19,243	71%	4,388,045	69%
Not stated	1,367	5%	1,039	4%	333,360	5%
Overseas visitors	70	0%	47	0%	60,577	1%
Total	20815	100%	178,006	100%	4,997,818	100%

Source: Table B11, 1996 & 2001 Census¹² & Coffs Harbour Population Profile 2004

Population Growth By Locality

The Kempsey Shire has been divided into ten localities. Each locality is based around an urban or village centre or a section of the rural hinterland. Table 4.1 lists these areas and the total number of people in each locality, as well as the percentage of the total population. Each area or locality has been based on ABS Census Collector Districts.¹³

A map showing the boundaries of each locality is attached as Appendix 1.

Each locality is dealt with separately, with a snapshot of information such as numbers of males and females, total population, number of indigenous people, persons born in Australia, numbers of overseas visitors and tenure.

Tables at Appendix 2 provide the data for discussing age, employment, weekly household income, dwelling structure and family type etc. The percentages or proportions are then used to compare the locality with the average for the Kempsey Shire. ■

Table 4.1
Population 2001 Census by Locality

Locality	No.	%
Stuarts Point	781	3%
South West Rocks	4,359	16%
Hat Head	322	1%
Crescent Head	1,186	4%
Smithtown & Gladstone	973	4%
Frederickton	903	3%
Kempsey	7,984	30%
Coastal Rural	2,125	8%
Central Rural	6,788	25%
Inland Rural	1,513	6%
Total Shire	26,934	100%

Source: 2001 ABS Census Note: Figures includes overseas visitors



¹³The ABS defines a Collection District (CD) as the *smallest unit for collecting and recording data*. A Collection District can be added up or aggregated to cover larger areas. In the 2001 Census Collector Districts in urban areas averaged about 220 dwellings and in rural areas the number of dwellings for each CD was reduced as population densities decreased.

Selected Information

Total Males	411
Total Females	358
Total Persons	781
Total Indigenous Males	18
Total Indigenous Females	14
Total Indigenous Persons	32
Persons Born in Australia	688
Australian Citizens	736
Overseas Visitors	0
Total Dwellings	286
Fully Owned Dwellings	204
Rental Properties	68
Dwellings Being Purchased	57

Source: 2001 Census Basic Community Profile, ABS

Stuarts Point is a small coastal village on the east coast of the Kempsey Shire, located at the old mouth of the Macleay River. The village has a small permanent population and a moderate seasonal population with boating, fishing and general relaxation extremely popular given close proximity to extensive local waterways and beaches.

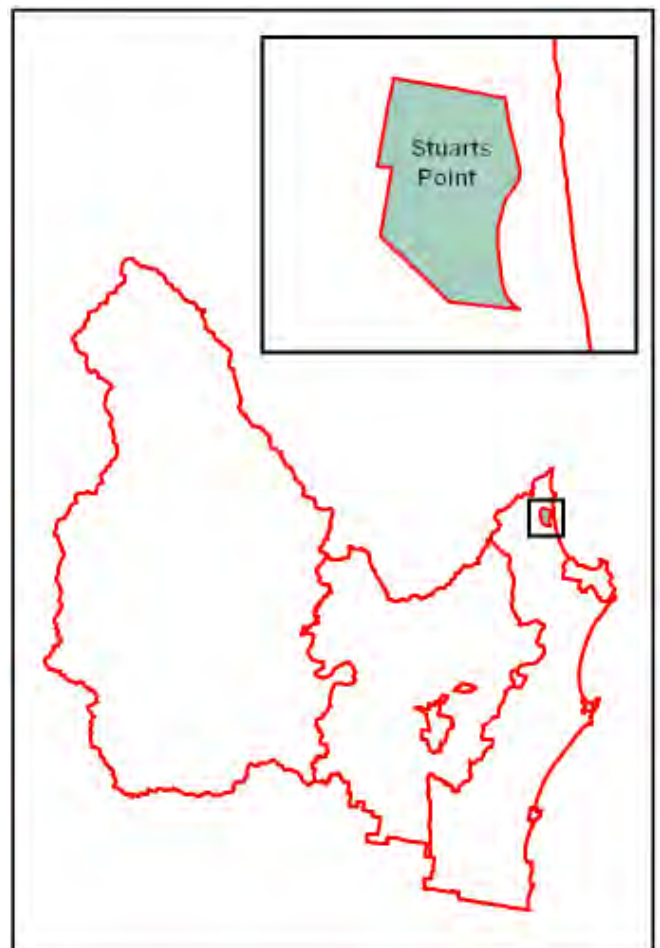
Stuarts Point has limited infrastructure and is accessed from the Pacific Highway between Kempsey and Macksville.

The population of Stuarts Point is low and most permanent residents are employed in surrounding towns rather than in town which only contains a few shops, a club, a tavern and one caravan park in the village.

Stuarts Point has a high percentage (43%) of people over 55 years old, a very high 65.7% are not in the labour force and above average proportions of persons are employed in clerical, sales and labourers and related industry. Weekly household incomes are below average with 61% earning less than \$500 per week.

Only 15.1% of private dwellings are unoccupied, caravans and cabins account for 12% of dwelling structures, with flats, units or apartments 4.3%. This indicates a high permanent population, and a much wider range of accommodation than Hat Head.

Family couples without children represent 48.8% of all family types, indicative of the number of retirees in Stuarts Point. ■



Selected Information

Total Males	2,128
Total Females	2,189
Total Persons	4,359
Total Indigenous Males	55
Total Indigenous Females	58
Total Indigenous Persons	113
Persons Born in Australia	3,847
Australian Citizens	4,149
Overseas Visitors	6
Total Dwellings	1,335
Fully Owned Dwellings	1,032
Rental Properties	506
Dwellings Being Purchased	245

Source: 2001 Census Basic Community Profile, ABS

South West Rocks is a growing coastal town situated near the mouth of the Macleay River, popular with tourists and an ideal location for retirees and permanent residents. The climate is excellent and the beaches numerous, with boating, fishing and other water sports very popular. The area includes Arakoon, the historic Trial Bay Gaol and the Smoky Cape Lighthouse situated in the Arakoon State Conservation area.

South West Rocks is located on the east coast of the Kempsey Shire, with good views of Trial Bay and Horseshoe Bay. Infrastructure is excellent and is easily accessible from both the Pacific Highway and Kempsey.

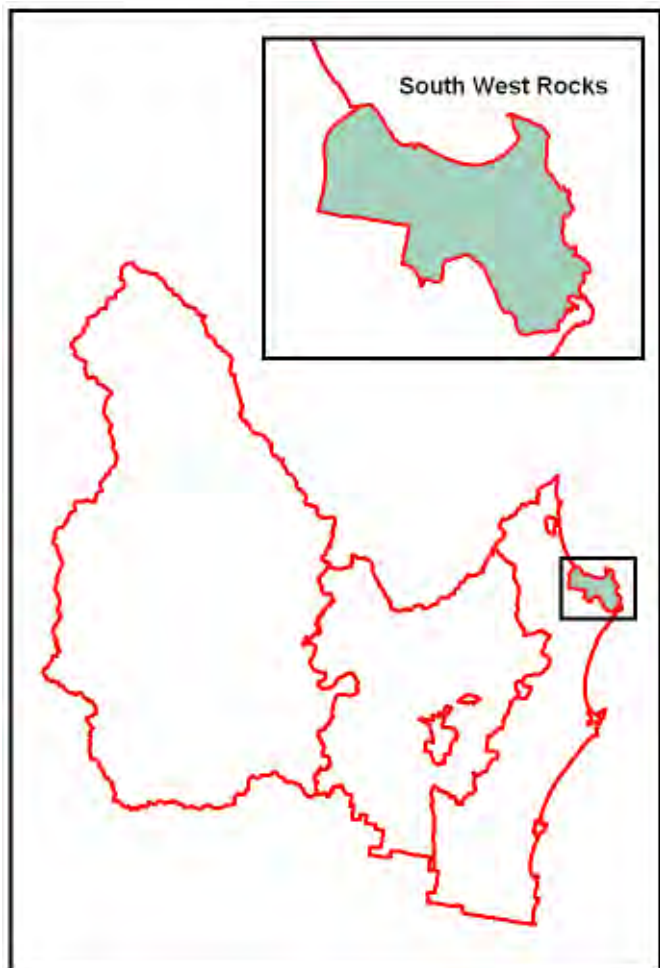
South West Rocks has a moderate population with the working population employed in the town itself and Kempsey. Local facilities include restaurants, cafes, hotels, clubs, sporting fields and schools. A small industrial park has been established on the outskirts of town and boat charters are available from the Macleay River.

People older than 50 years (50.2%) dominate the population of South West Rocks. Employment in professional occupations is relatively high and an above average 55.9% are not engaged in the labour force.

Weekly household income levels less than \$500 a week are quite high at 51.7% and, separate houses comprise 56% of dwelling structures, 19.7% of private dwellings are unoccupied. Flats, units or apartments total 10.4%.

Family couples without children are 55.2% and couple families with children a low 28.8%.

Levels of post school qualifications are low. ■



Selected Information

Total Males	190
Total Females	142
Total Persons	322
Total Indigenous Males	6
Total Indigenous Females	6
Total Indigenous Persons	12
Persons Born in Australia	286
Australian Citizens	299
Overseas Visitors	0
Total Dwellings	133
Fully Owned Dwellings	82
Rental Properties	27
Dwellings Being Purchased	23

Source: 2001 Census Basic Community Profile, ABS

Hat Head is a small coastal village surrounded by the Hat Head National Park and is very popular with tourists during summer holidays, with good fishing, boating, beaches and bushwalking. Bird watching in nearby wetlands is also very popular as well as whale watching from Korogoro Point.

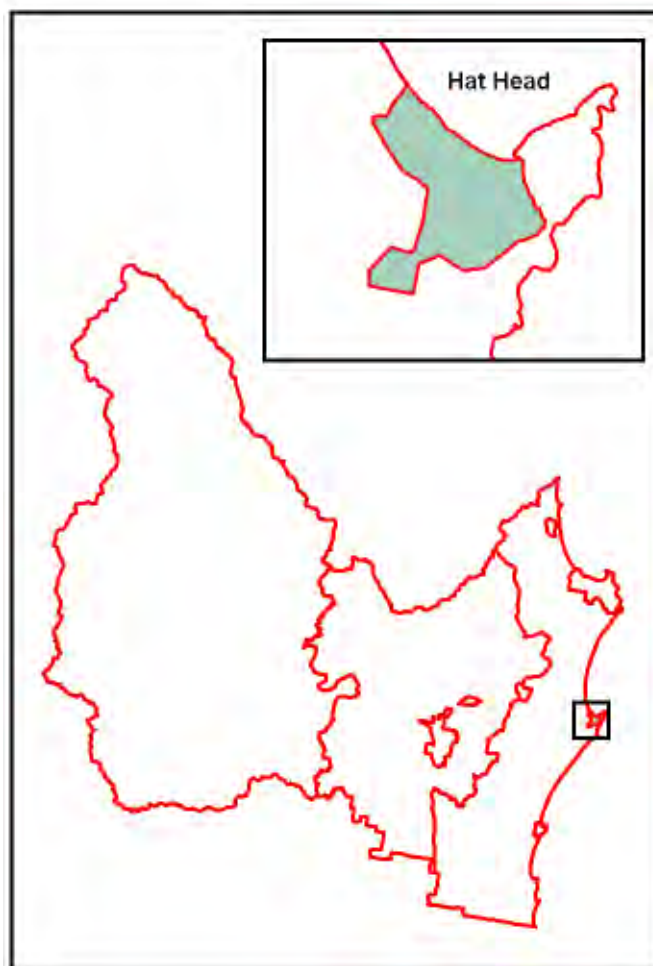
Hat Head has limited infrastructure and is accessed from the main road to South West Rocks.

Hat Head has a very small population with most people employed in Kempsey and surrounds rather than in the village which has very few employment opportunities. Facilities include two shops, a club and a caravan park.

Hat Head has a relatively high proportion of older persons, 40% over 55 years old, a high percentage not in the labour force, 53.9%, and above average proportions of people employed in professional occupations and trades. There are no particular weekly income groups that stand out in comparison to the average for the Kempsey Shire.

Significantly 48.4% of private dwellings are unoccupied indicating seasonal population fluctuations. Caravans and cabins accounted for 5.5% of dwelling structures in the 2001 ABS census and there were no semi-detached, terrace or townhouses. This confirms that Hat Head is a holiday town with a large caravan park and numerous holiday rentals.

Family couples without children account for 50% of all family types, indicative of the number of retirees in Hat Head. ■



Selected Information

Total Males	589
Total Females	607
Total Persons	1,186
Total Indigenous Males	23
Total Indigenous Females	28
Total Indigenous Persons	51
Persons Born in Australia	1,025
Australian Citizens	1,108
Overseas Visitors	10
Total Dwellings	341
Fully Owned Dwellings	207
Rental Properties	161
Dwellings Being Purchased	92

Source: 2001 Census Basic Community Profile, ABS

Crescent Head is a small coastal town, a popular tourist destination and an ideal living environment for local residents. Crescent Head has a small permanent population and large seasonal population, especially during the summer months when large numbers of tourists take advantage of the beaches, surf, good fishing and bushwalking in nearby national parks. The town has a relaxed lifestyle and good ocean views.

Crescent Head is located on the east coast of the Kempsey Shire, has good infrastructure and is easily accessible from the Pacific Highway and Kempsey.

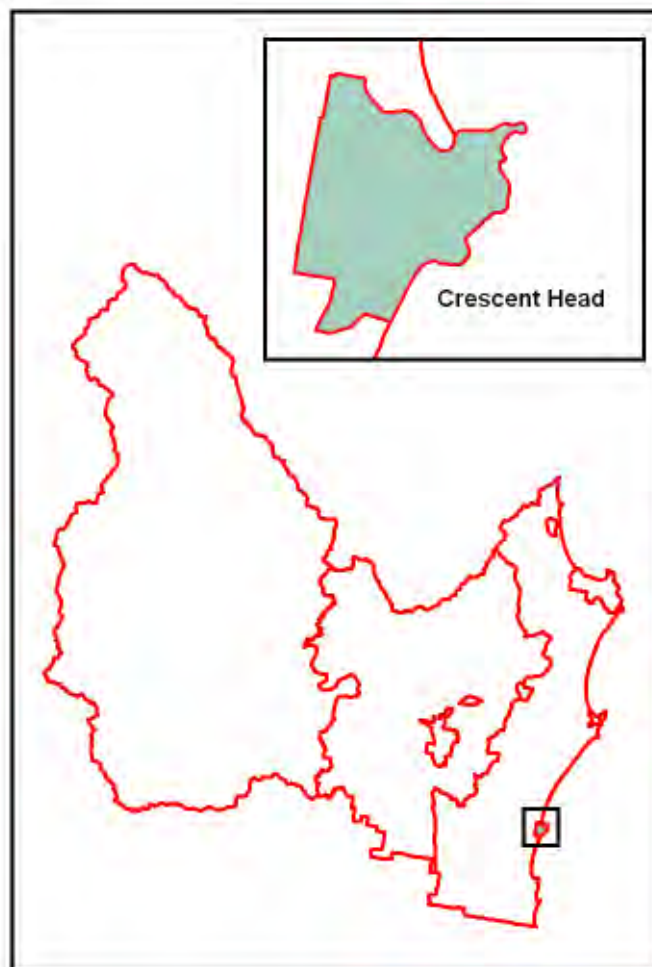
Crescent Head has a small population, with most people commuting to Kempsey and surrounds for employment. Crescent Head has few full time employment opportunities. Facilities in town include a tavern, a club, several shops, a caravan park and a primary school.

Crescent Head has a relatively high proportion of middle age persons, high employment and higher proportion not in the labour force than most regions, indicative of good income levels, a professional work force and large number of retirees.

There is a much wider range of housing types than rural areas given that Crescent Head is a tourist town, with holiday rentals, units and a large caravan park, all providing permanent and temporary accommodation. Separate houses and unoccupied private dwellings account for 76.8% of dwelling structures, compared to 87.9% for the Kempsey Shire.

Family couples without children account for 40.8% of all family types, indicative of the number of retirees in Crescent Head.

Those holding post school education qualifications, diplomas or bachelor degrees or post graduate degrees, are a relatively high 23.4% compared to the Shire average of 9.3%. This correlates with data relating to employment levels, employment sector and weekly household income. Although Crescent Head has a relaxed life style and village character, the high price of housing and rental accommodation generally requires higher levels of disposable income or for retiring baby boomers to have relatively good levels of capital investment for entering the property market. ■



Selected Information

Total Males	458
Total Females	515
Total Persons	973
Total Indigenous Males	15
Total Indigenous Females	13
Total Indigenous Persons	28
Persons Born in Australia	877
Australian Citizens	928
Overseas Visitors	0
Total Dwellings	383
Fully Owned Dwellings	218
Rental Properties	48
Dwellings Being Purchased	95

Source: 2001 Census Basic Community Profile, ABS

Smithtown and **Gladstone** are located on either side of the Macleay River with a small population and easily accessed from either Kempsey or South West Rocks. Both villages are subject to flooding. Gladstone is a heritage conservation area and contains a number of significant heritage buildings. Boating and fishing are popular on the Macleay River and picnic facilities are located on the banks of the river. Besides a few shops, taverns and a club, both towns rely on passing trade and local residents. It is located in the centre of a farming community, with some sporting and educational facilities. Infrastructure is limited and employment opportunities are largely restricted to the Nestlé factory in Smithtown.

Smithtown and Gladstone have average age group numbers / proportions with no specific age group standing out in comparison to the average rates for the Kempsey Shire.

Higher than average proportions of the work force are employed as tradespersons, clerical and sales persons, intermediate production, transport workers and labourers.

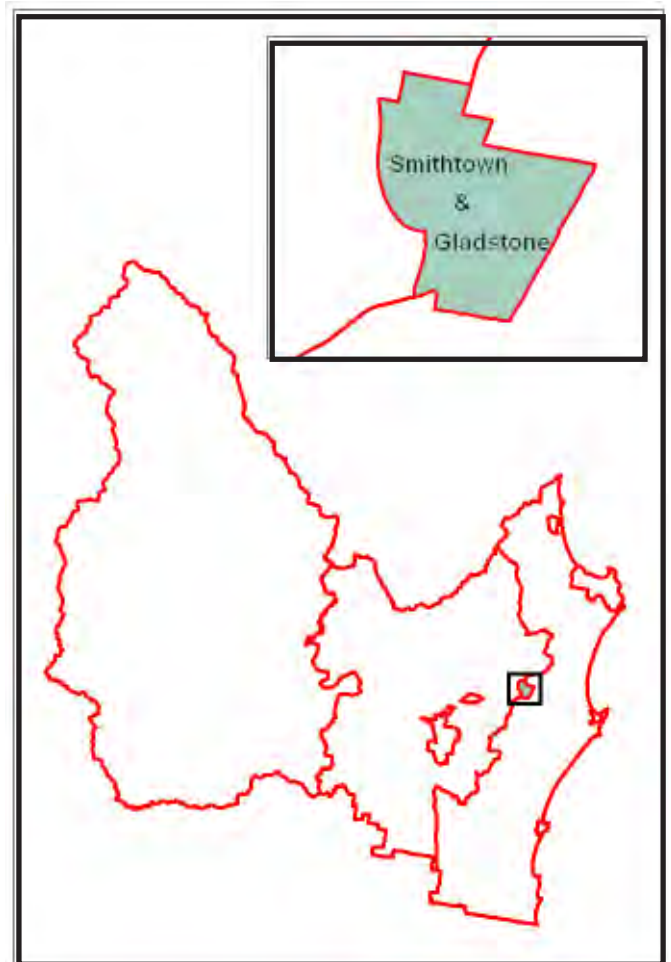
A relatively high 52.3% are engaged in the labour force, with unemployment at 16.8%, similar to 16.5% for the Macleay. Smithtown and Gladstone are situated midway between Kempsey and South West Rocks, allowing residents to commute to either town for work or to the surrounding district.

Weekly household income levels less than \$500 a week represent 45.7% of all households, similar to the average rate for the Shire.

Similar to Frederickton, 92% of dwelling structures in Smithtown and Gladstone are separate houses, with only 6.5% unoccupied private dwellings, with no flats or apartments. These figures confirm that Smithtown and Gladstone have permanent populations that live and work in the area.

Family couples with children represent 40.2% of all family types and couple families without children are 41.2%, indicating a mix of families and retirees.

Levels of post school qualifications are relatively low. ■



Selected Information

Total Males	420
Total Females	473
Total Persons	903
Total Indigenous Males	11
Total Indigenous Females	18
Total Indigenous Persons	29
Persons Born in Australia	828
Australian Citizens	862
Overseas Visitors	0
Total Dwellings	309
Fully Owned Dwellings	164
Rental Properties	72
Dwellings Being Purchased	80

Source: 2001 Census Basic Community Profile, ABS

Frederickton is located on the Pacific Highway about 5 kilometres north of Kempsey. The village is well known for the “Fredo Pie Shop” located on the highway. A hotel and shops exist along the Pacific Highway that rely on both local and passing trade. The town is predominantly a residential town with some sport and educational facilities.

Frederickton has limited infrastructure, is very accessible being located on the Pacific Highway and has a largely permanent population, with employment opportunities being confined to local enterprise and Kempsey to the south.

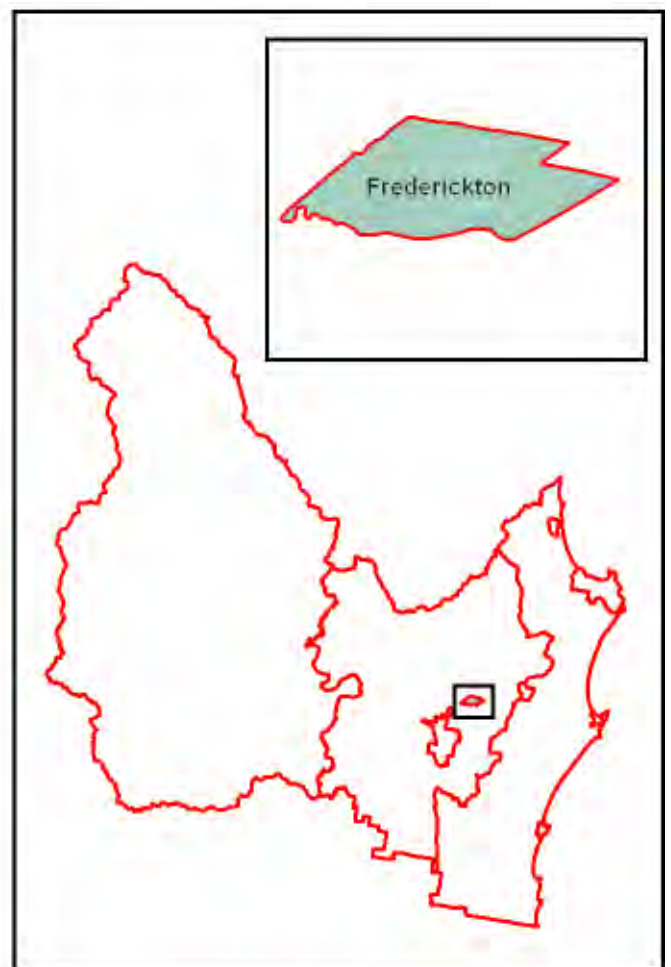
Frederickton has a high 34.7% of people younger than 19 years old, compared to 29.1% in the Kempsey Shire, with a higher than average proportion of workers employed as trades persons, clerical and sales workers and labourers.

A relatively high 53.9% are engaged in the labour force, with unemployment at 20.3%.

Significantly 84.6% of dwellings are separate houses, with a very low 9.3% unoccupied private dwellings, with some houses or flats attached to shops. These figures show that Frederickton has a stable population predominantly living in separate houses.

Family couples with children account for 44.9% of all family types and one parent family types 23.7% and a low 29.8% couple families without children.

Levels of post school qualifications are relatively low. ■



Selected Information

Total Males	3,794
Total Females	4,186
Total Persons	7,984
Total Indigenous Males	652
Total Indigenous Females	754
Total Indigenous Persons	1,406
Persons Born in Australia	7,110
Australian Citizens	7,386
Overseas Visitors	12
Total Dwellings	2,539
Fully Owned Dwellings	1,335
Rental Properties	1,215
Dwellings Being Purchased	504

Source: 2001 Census Basic Community Profile, ABS

Kempsey is the largest urban centre in the Macleay Valley, with access to good commercial, industrial, health and educational facilities. The population mostly comprises of permanent residents with holiday makers frequenting caravan parks and motels along the Pacific Highway.

Kempsey is located on either side of the Macleay River and is well known for the Akubra hat factory. The town has hotels, cafes, shops and a number of government offices, at local and State Government levels.

The town is serviced by the Pacific Highway and the Brisbane to Sydney railway line, has excellent infrastructure and provides a wide range of housing.

Kempsey as a locality includes West Kempsey, East Kempsey and South Kempsey. The total population of Kempsey is relatively large compared to surrounding towns and villages, whilst the Indigenous population is significant and the town is a key employer in the region, for both full time and part time employees.

Kempsey has similar proportions of people in different age groups compared to the averages for the Kempsey Shire, with 31% younger than 19 years old (29.1% for the Shire).

Kempsey has a low 4.2% employed as managers and administrators and an above average 43.4% proportion of workers employed as clerical, sales, service, production and transport workers.

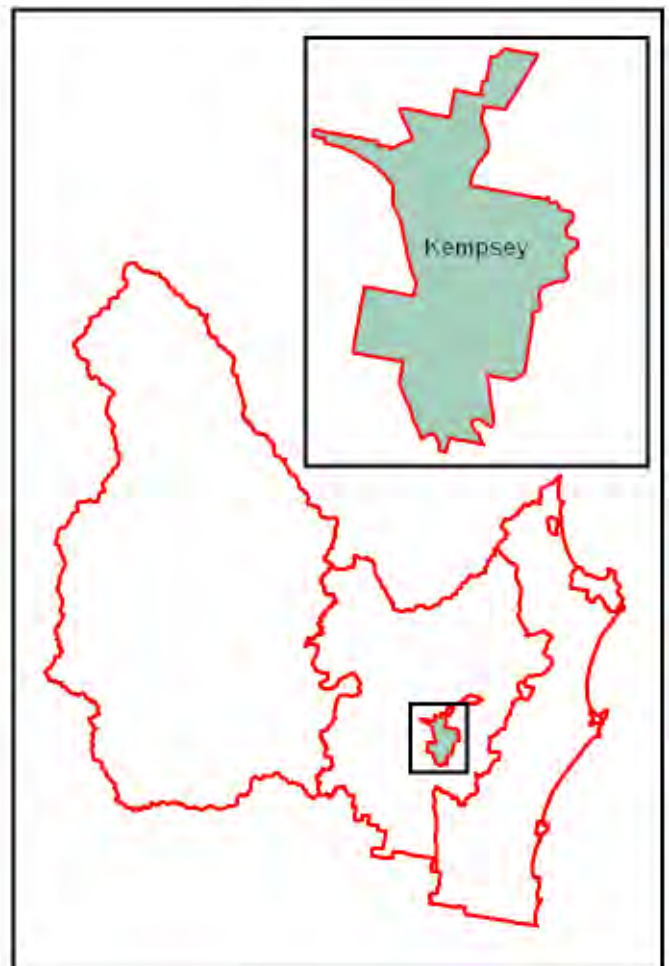
A moderate 44.8% are engaged in the labour force, less than the average for the Shire, with unemployment levels 19.3% (16.5% for the Shire).

Weekly household income levels less than \$500 a week are 47.7%, slightly above the average rate for the Kempsey Shire, indicating relatively high proportions of people on lower incomes.

There is a wide range of dwelling structures in Kempsey, from mainly separate houses (76.7%), to semi-detached dwellings and townhouses, to flats, units and apartments (7.7%) and caravans, cabins and houses or flats attached to shops (3.6%). A relatively low 8.4% of private dwellings are unoccupied, indicating a more stable population living in separate houses in Kempsey.

Family couples with children account for 35% of family types, couple families without children 34.12% and one parent families a high 28.8%. These figures show that 63.8% of families have children, suggesting a range of consequences, such as increased pressure on health and education in greater Kempsey.

Post school qualification levels are low. ■



Selected Information

Total Males	1,078
Total Females	982
Total Persons	2,125
Total Indigenous Males	71
Total Indigenous Females	48
Total Indigenous Persons	119
Persons Born in Australia	1,889
Australian Citizens	2,037
Overseas Visitors	0
Total Dwellings	759
Fully Owned Dwellings	434
Rental Properties	129
Dwellings Being Purchased	155

Source: 2001 Census Basic Community Profile, ABS

Coastal Rural includes the Macleay River flood plain, low lying coastal land, farm lands and the Hat Head National Park, but excludes the coastal towns and villages. Dairy and cattle farming dominates the region, whilst tourism is popular, with access to wonderful beaches and coastal national parks.

The Coastal Rural Region is located along the eastern part of the Kempsey Shire, with Port Macquarie – Hastings LGA in the south and the Nambucca Shire in the north.

The villages of Grassy Head and Kundabung are located in the area. It is an extensive area although relatively sparsely populated, with farming being a strong employer.

Coastal Rural has a good spread of people through all age groups, with no particular age group standing out in comparison to the average for the Kempsey Shire.

The Coastal Rural region has similar occupational trends in comparison to Inland Rural where 37% of people are employed in management, administration and professional occupations, compared to 22.7% for the Kempsey Shire. The agriculture, forestry and fishing industry employs 26.8% of the working population in the region, the second highest after Inland Rural and much higher than the average 7.4% for the Kempsey Shire. These trends are expected given the rural nature of the area, the exclusion of towns and proximity to Kempsey and surrounding towns.

Employment levels in the Coastal Rural region are a high 49.2% and unemployment 12.6%, indicating an above average number in the labour force.

Total household weekly incomes less than \$500, are 29.4%, compared to 33.9 % for the Kempsey Shire, slightly less than the average for the Shire, indicating low levels of income for one third of the working population.

Separate housing and unoccupied private dwellings comprise 96.6% of all dwelling structures, with no townhouses or semi-detached housing in the Coastal Rural region. These figures are expected given that towns have been excluded from the region and the history of the area is largely agriculture.

Family couples with children and family couples without children comprise 43.3% and 43.1% respectively, above average for the Shire. These figures are expected given the dominance of the farming community in the Coastal Rural region.

Post school education levels within Coastal Rural, residents holding diplomas or bachelor degrees or post graduate degrees, are 11.7%, compared to 5.2% for the Kempsey Shire and 13.5% for NSW. These figures correlate strongly with earlier data dealing with occupation and employment, more “white collar” and a higher percentage of people employed than in other regions. ■



Selected Information

Total Males	3,419
Total Females	3,360
Total Persons	6,788
Total Indigenous Males	165
Total Indigenous Females	156
Total Indigenous Persons	321
Persons Born in Australia	5,919
Australian Citizens	6,358
Overseas Visitors	6
Total Dwellings	2,340
Fully Owned Dwellings	1,191
Rental Properties	261
Dwellings Being Purchased	584

Source: 2001 Census Basic Community Profile, ABS

The **Central Rural** region includes those hinterland areas to the north and south of Kempsey, mainly National Parks, State Forests and cattle farms. Timber harvesting is frequent in the area and a number of hamlets or small villages such as Eungai Creek, Collombatti and Kundabung are scattered through the region.

The Central Rural region is accessed by a network of local and main roads with excellent tourist drives through the region. The area is essentially rural, with pockets of low density residential areas located within close proximity to Kempsey.

The region contains a moderate population with employment largely confined to the rural areas, Kempsey and surrounding towns. Facilities are very limited in the area with residents having to drive to Kempsey for shopping, schooling, sport and entertainment.

Age groups in Central Rural are similar to the average for the Kempsey Shire with no concentration of persons at either end of the scale. Total involvement in the labour force is quite high at 55.8% with involvement in a wide range of occupations and weekly household incomes are above average with only 38% having weekly incomes less than \$500.

Separate housing at 89.2% dominates the area with very low unoccupied private dwellings.

Couple families without children are a relatively low 37.9%, indicative of lower numbers of retirees in Central Rural.

A moderate 28.7% hold post school qualifications, slightly above the average for the Kempsey Shire. ■



Selected Information

Total Males	788
Total Females	739
Total Persons	1,513
Total Indigenous Males	81
Total Indigenous Females	93
Total Indigenous Persons	174
Persons Born in Australia	1,253
Australian Citizens	1,352
Overseas Visitors	0
Total Dwellings	539
Fully Owned Dwellings	302
Rental Properties	83
Dwellings Being Purchased	104

Source: 2001 Census Basic Community Profile, ABS

Inland Rural is known as the Upper Macleay Hinterland and includes several National Parks, farmland and historic towns of Bellbrook and Willawarrin. The area contains spectacular mountains, forests and rivers, providing a number of tourism opportunities, including farm stay accommodation and active and passive recreation.

The Inland Rural area is the most western part of the Kempsey Shire, bordering the Armidale Dumaresq and Walcha Shires to the west, the Nambucca Shire to the north and Port Macquarie – Hastings to the south.

The Inland Rural region is relatively large and sparsely populated given that much of the area is covered by National Parks, forestry and farm land. Cattle farming is common in the area. Agriculture together with forestry provides employment.

The Inland Rural area has the highest proportion of persons in the Kempsey Shire between the ages of 10 and 14 years old and the lowest proportion of those 70 years and older.

The Inland Rural area has a high 35% of people employed in management, administration and professional occupations and a relatively low 18% in clerical, sales and service worker and labourer categories. The agriculture, forestry and fishing industry employs 26.8% of the working population in the region, the highest percentage of any industry in comparison to other regions within the Kempsey Shire.

Employment levels in the Inland Rural region are 35.4% and unemployment 10.7%, below average employment

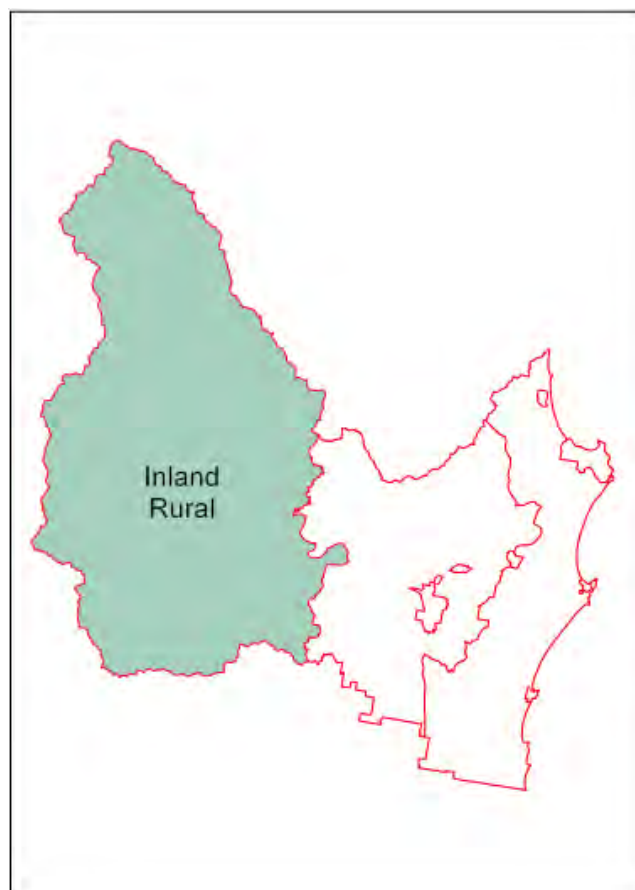
and above average unemployment for the Macleay, indicating much lower levels of disposable income. A high proportion of residents are employed in management, administration and professional occupations, indicating a broad spectrum of social groups reside in this area.

Total household weekly incomes less than \$500, is 56.8%, compared to 33.9 % for the Kempsey Shire, indicating lower income levels.

Separate houses dominate (96%) with no townhouses or semi-detached housing in the Inland Rural region. These figures are expected given the rural nature of the area, the history of the villages and the isolation of many properties.

In comparison to the Kempsey Shire, family couples with children comprise 41.28 % and family couples without children 34.3%, less than the average for the Macleay, indicating a mix of family groups with different life styles.

Post school education levels within Inland Rural are quite low with only 6.4% holding diplomas or bachelor degrees or post graduate degrees. This compares to the 5.2% for the Kempsey Shire and 13.5 % for NSW. ■



Appendix 1



AUSTRALIAN BUREAU OF STATISTICS 2001 Census of Population and Housing

Summary Totals

B03 AGE PERSONS

CD	0-4	5-9	10-14	15-19	20-24	25-29	30-34	35-39	40-44	45-49	50-54	55-59	60-64	65-69	70-74	75-79	80 +	Total	
Inland rural																			
Total	91	112	185	103	49	52	72	129	145	164	102	81	98	63	30	30	21	1,527	
Inland Rural	6.0%	7.3%	12.1%	6.7%	3.2%	3.4%	4.7%	8.4%	9.5%	10.7%	6.7%	5.3%	6.4%	4.1%	2.0%	2.0%	1.4%	100.0%	
Coastal rural																			
Total	113	173	167	138	61	67	96	162	196	159	199	135	134	85	84	45	46	2,060	
Coastal Rural	5.5%	8.4%	8.1%	6.7%	3.0%	3.3%	4.7%	7.9%	9.5%	7.7%	9.7%	6.6%	6.5%	4.1%	4.1%	2.2%	2.2%	100.0%	
Crescent Head																			
Total	70	92	98	78	40	40	54	65	118	137	86	58	65	49	68	38	40	1,196	
Crescent Head	5.9%	7.7%	8.2%	6.5%	3.3%	3.3%	4.5%	5.4%	9.9%	11.5%	7.2%	4.8%	5.4%	4.1%	5.7%	3.2%	3.3%	100.0%	
Hat Head																			
Total	811	12	18	23	13	18	15	9	26	22	32	10	32	24	16	24	18	20	332
Hat Head	3.6%	5.4%	6.9%	3.9%	5.4%	4.5%	2.7%	7.8%	6.6%	9.6%	3.0%	9.6%	7.2%	4.8%	7.2%	5.4%	6.0%	100.0%	
Stuarts Point																			
Total	304	25	55	58	37	9	19	22	50	59	48	56	59	53	56	75	51	37	769
Stuarts Point	3.3%	7.2%	7.5%	4.8%	1.2%	2.5%	2.9%	6.5%	7.7%	6.2%	7.3%	7.7%	6.9%	7.3%	9.8%	6.6%	4.8%	100.0%	
Freddo																			
Total	302	90	92	75	53	25	54	71	61	52	62	57	43	36	46	25	22	29	893
Freddo	10.1%	10.3%	8.4%	5.9%	2.8%	6.0%	8.0%	6.8%	5.8%	6.9%	6.4%	4.8%	4.0%	5.2%	2.8%	2.5%	3.2%	100.0%	
Smithtown and Gladstone																			
Total	82	77	68	62	30	53	65	74	78	49	66	51	65	34	44	47	28	973	
Smithtown and Gladstone	8.4%	7.9%	7.0%	6.4%	3.1%	5.4%	6.7%	7.6%	8.0%	5.0%	6.8%	5.2%	6.7%	3.5%	4.5%	4.8%	2.9%	100.0%	
Kempsey																			
Total	656	635	609	574	446	472	423	457	515	507	526	405	374	331	298	326	426	7,980	
Kempsey	8.2%	8.0%	7.6%	7.2%	5.6%	5.9%	5.3%	5.7%	6.5%	6.4%	6.6%	5.1%	4.7%	4.1%	3.7%	4.1%	5.3%	100.0%	
South West Rocks																			
Total	211	256	254	176	116	159	193	233	287	267	280	347	400	386	323	266	163	4,317	
South West Rocks	4.9%	5.9%	5.9%	4.1%	2.7%	3.7%	4.5%	5.4%	6.6%	6.2%	6.5%	8.0%	9.3%	8.9%	7.5%	6.2%	3.8%	100.0%	
Central Rural																			
Total	421	573	672	527	225	255	352	483	589	584	537	443	319	281	235	162	121	6,779	
Central Rural	6.2%	8.5%	9.9%	7.8%	3.3%	3.8%	5.2%	7.1%	8.7%	8.6%	7.9%	6.5%	4.7%	4.1%	3.5%	2.4%	1.8%	100.0%	
Total Shire																			
Total	1,771	2,083	2,209	1,761	1,019	1,186	1,357	1,740	2,061	2,009	1,919	1,654	1,568	1,347	1,206	1,005	931	26,826	
Total Shire	6.6%	7.8%	8.2%	6.6%	3.8%	4.4%	5.1%	6.5%	7.7%	7.5%	7.2%	6.2%	5.8%	5.0%	4.5%	3.7%	3.5%	100.0%	
Mid North Coast																			
Total	16,564	19,955	21,999	18,072	10,519	11,800	14,320	17,859	21,047	19,803	18,850	16,650	15,524	14,583	13,855	10,947	12,928	275,275	
Mid North Coast	6.0%	7.2%	8.0%	6.6%	3.8%	4.3%	5.2%	6.5%	7.6%	7.2%	6.8%	6.0%	5.6%	5.3%	5.0%	4.0%	4.7%	100.0%	
NSW																			
Total	422,341	445,983	445,026	436,626	408,719	446,515	468,524	483,003	482,318	438,277	412,967	325,330	267,064	228,029	217,237	177,684	266,103	6,371,746	
NSW	6.6%	7.0%	7.0%	6.9%	6.4%	7.0%	7.4%	7.6%	7.6%	6.9%	6.5%	5.1%	4.2%	3.6%	3.4%	2.8%	4.2%	100.0%	

AUSTRALIAN BUREAU OF STATISTICS 2001 Census of Population and Housing

Summary Totals

B17 FAMILY TYPE

CD	Couple family:								One parent family:								Other family	
	with children under 15 and non-dependent children	with children under 15 without non-dependent children	with dependent students (15-24) and non-dependent children	with dependent students (15-24) without non-dependent children	with children under 15 & non-dependent children	with children under 15 & non-dependent students without non-dependent children	with non-dependent children	Total	Couple family without children	with children under 15 and non-dependent children	with children under 15 without non-dependent children	with dependent students (15-24) and non-dependent children	with dependent students (15-24) without non-dependent children	with children under 15 & non-dependent children	with children under 15 & non-dependent students without non-dependent children	with non-dependent children		Total
Inland rural																		
Total	6	89	3	9	3	21	30	161	134	3	53	0	3	0	7	19	85	10
Inland Rural	1.5%	22.8%	0.8%	2.3%	0.8%	5.4%	7.7%	41.3%	34.4%	0.8%	13.6%	0.0%	0.8%	0.0%	1.8%	4.9%	21.8%	2.6%
Coastal rural																		
Total	13	134	14	26	0	28	41	256	255	3	38	0	0	3	6	21	71	9
Coastal Rural	2.2%	22.7%	2.4%	4.4%	0.0%	4.7%	6.9%	43.3%	43.1%	0.5%	6.4%	0.0%	0.0%	0.5%	1.0%	3.6%	12.0%	1.5%
Crescent Head																		
Total	3	78	0	16	0	17	10	124	127	3	37	3	3	0	5	9	60	0
Crescent Head	1.0%	25.1%	0.0%	5.1%	0.0%	5.5%	3.2%	39.9%	40.8%	1.0%	11.9%	1.0%	1.0%	0.0%	1.6%	2.9%	19.3%	0.0%
Hat Head																		
Total	4	13	0	3	0	3	6	29	39	3	3	0	0	0	0	4	10	0
Hat Head	5.1%	16.7%	0.0%	3.8%	0.0%	3.8%	7.7%	37.2%	50.0%	3.8%	3.8%	0.0%	0.0%	0.0%	0.0%	5.1%	12.8%	0.0%
Stuarts Point																		
Total	3	33	3	5	3	7	11	65	102	0	21	0	0	0	7	11	39	3
Stuarts Point	1.4%	15.8%	1.4%	2.4%	1.4%	3.3%	5.3%	31.1%	48.8%	0.0%	10.0%	0.0%	0.0%	0.0%	3.3%	5.3%	18.7%	1.4%
Freddo																		
Total	5	72	0	3	0	7	23	110	73	3	31	0	3	0	5	16	58	4
Freddo	2.0%	29.4%	0.0%	1.2%	0.0%	2.9%	9.4%	44.9%	29.8%	1.2%	12.7%	0.0%	1.2%	0.0%	2.0%	6.5%	23.7%	1.6%
Smithtown and Gladstone																		
Total	4	73	3	3	0	15	17	115	118	3	20	3	7	0	3	14	50	3
Smithtown anc	1.4%	25.5%	1.0%	1.0%	0.0%	5.2%	5.9%	40.2%	41.3%	1.0%	7.0%	1.0%	2.4%	0.0%	1.0%	4.9%	17.5%	1.0%
Kempsey																		
Total	41	371	19	46	21	63	134	695	676	33	314	9	39	3	36	136	570	40
Kempsey	2.1%	18.7%	1.0%	2.3%	1.1%	3.2%	6.8%	35.1%	34.1%	1.7%	15.9%	0.5%	2.0%	0.2%	1.8%	6.9%	28.8%	2.0%
South West Rocks																		
Total	15	210	3	19	0	42	57	346	663	0	97	3	12	3	12	49	176	16
South West R	1.2%	17.5%	0.2%	1.6%	0.0%	3.5%	4.7%	28.8%	55.2%	0.0%	8.1%	0.2%	1.0%	0.2%	1.0%	4.1%	14.7%	1.3%
Central Rural																		
Total	54	448	31	70	19	116	145	883	729	18	137	3	15	0	26	91	290	22
Central Rural	2.8%	23.3%	1.6%	3.6%	1.0%	6.0%	7.5%	45.9%	37.9%	0.9%	7.1%	0.2%	0.8%	0.0%	1.4%	4.7%	15.1%	1.1%
Total Shire																		
Total	148	1,521	76	200	46	319	474	2,784	2,916	69	751	21	82	9	107	370	1,409	107
Total Shire	2.1%	21.1%	1.1%	2.8%	0.6%	4.4%	6.6%	38.6%	40.4%	1.0%	10.4%	0.3%	1.1%	0.1%	1.5%	5.1%	19.5%	1.5%
Mid North Coast																		
Total	1,140	16,048	852	2,191	503	3,683	4,370	28,787	32,212	519	6,708	229	1,036	126	1,121	2,917	12,656	840
Mid North Coa	1.5%	21.5%	1.1%	2.9%	0.7%	4.9%	5.9%	38.6%	43.2%	0.7%	9.0%	0.3%	1.4%	0.2%	1.5%	3.9%	17.0%	1.1%
NSW																		
Total	29,802	419,756	39,654	57,284	16,532	79,522	148,925	791,475	577,401	10,363	112,257	8,344	21,137	3,276	16,822	83,660	255,859	29,848
NSW	1.8%	25.4%	2.4%	3.5%	1.0%	4.8%	9.0%	47.8%	34.9%	0.6%	6.8%	0.5%	1.3%	0.2%	1.0%	5.1%	15.5%	1.8%

AUSTRALIAN BUREAU OF STATISTICS 2001 Census of Population and Housing

Summary Totals		B18 DWELLING STRUCTURE															
CD	Separate house	Semi-detached, row or terrace house, townhouse etc. with:			Flat, unit or apartment:					Caravan, cabin, houseboat	Improvised home, tent, sleepers out	House or flat attached to a shop, office, etc.	Total	Not Stated	Unoccupied private dwellings	Total	
		One storey	Two or more storeys	Total	In a one or two storey block	In a three storey block	In a four or more storey block	Attached to a house	Total								
Inland rural																	
Total	539	0	0	0	3	0	0	3	6	9	3	6	18	3	149	715	
Inland Rural	75.4%	0.0%	0.0%	0.0%	0.4%	0.0%	0.0%	0.4%	0.8%	1.3%	0.4%	0.8%	2.5%	0.4%	20.8%	100.0%	
Coastal rural																	
Total	759	0	0	0	3	0	0	0	3	22	0	3	25	3	128	918	
Coastal Rural	82.7%	0.0%	0.0%	0.0%	0.3%	0.0%	0.0%	0.0%	0.3%	2.4%	0.0%	0.3%	2.7%	0.3%	13.9%	100.0%	
Crescent Head																	
Total	341	22	34	56	37	16	0	8	61	29	0	0	29	9	174	670	
Crescent Head	50.9%	3.3%	5.1%	8.4%	5.5%	2.4%	0.0%	1.2%	9.1%	4.3%	0.0%	0.0%	4.3%	1.3%	26.0%	100.0%	
Hat Head																	
Total	133	0	0	0	0	0	0	0	0	16	0	0	16	0	140	289	
Hat Head	46.0%	0.0%	0.0%	0.0%	0.0%	0.0%	0.0%	0.0%	0.0%	5.5%	0.0%	0.0%	5.5%	0.0%	48.4%	100.0%	
Stuarts Point																	
Total	286	0	0	0	15	0	0	3	18	47	3	0	50	0	63	417	
Stuarts Point	68.6%	0.0%	0.0%	0.0%	3.6%	0.0%	0.0%	0.7%	4.3%	11.3%	0.7%	0.0%	12.0%	0.0%	15.1%	100.0%	
Freddo																	
Total	309	8	0	8	10	0	0	0	10	0	0	4	4	0	34	365	
Freddo	84.7%	2.2%	0.0%	2.2%	2.7%	0.0%	0.0%	0.0%	2.7%	0.0%	0.0%	1.1%	1.1%	0.0%	9.3%	100.0%	
Smithtown and Gladstone																	
Total	383	3	0	3	0	0	0	0	0	0	0	3	3	0	27	416	
Smithtown and Gladstone	92.1%	0.7%	0.0%	0.7%	0.0%	0.0%	0.0%	0.0%	0.0%	0.0%	0.0%	0.7%	0.7%	0.0%	6.5%	100.0%	
Kempsey																	
Total	2,539	76	36	112	230	20	0	6	256	91	3	26	120	6	277	3,310	
Kempsey	76.7%	2.3%	1.1%	3.4%	6.9%	0.6%	0.0%	0.2%	7.7%	2.7%	0.1%	0.8%	3.6%	0.2%	8.4%	100.0%	
South West Rocks																	
Total	1,335	129	17	146	203	33	6	6	248	149	3	14	166	10	469	2,374	
South West Rocks	56.2%	5.4%	0.7%	6.1%	8.6%	1.4%	0.3%	0.3%	10.4%	6.3%	0.1%	0.6%	7.0%	0.4%	19.8%	100.0%	
Central Rural																	
Total	2,340	21	0	21	9	0	0	3	12	25	3	6	34	9	207	2,623	
Central Rural	89.2%	0.8%	0.0%	0.8%	0.3%	0.0%	0.0%	0.1%	0.5%	1.0%	0.1%	0.2%	1.3%	0.3%	7.9%	100.0%	
Total Shire																	
Total	8,964	259	87	346	510	69	6	29	614	388	15	62	465	40	1,668	12,097	
Total Shire	74.1%	2.1%	0.7%	2.9%	4.2%	0.6%	0.0%	0.2%	5.1%	3.2%	0.1%	0.5%	3.8%	0.3%	13.8%	100.0%	
Mid North Coast																	
Total	84,658	5,537	1,802	7,339	7,284	1,160	925	424	9,793	4,701	253	625	5,579	823	13,293	121,485	
Mid North Coast	69.7%	4.6%	1.5%	6.0%	6.0%	1.0%	0.8%	0.3%	8.1%	3.9%	0.2%	0.5%	4.6%	0.7%	10.9%	100.0%	
NSW																	
Total	1,648,023	111,926	106,070	217,996	148,239	135,741	125,688	8,705	418,373	26,094	1,976	11,417	39,487	19,798	227,863	2,571,540	
NSW	64.1%	4.4%	4.1%	8.5%	5.8%	5.3%	4.9%	0.3%	16.3%	1.0%	0.1%	0.4%	1.5%	0.8%	8.9%	100.0%	

AUSTRALIAN BUREAU OF STATISTICS 2001 Census of Population and Housing

B23 NON-SCHOOL QUALIFICATION: LEVEL OF EDUCATION BY SEX(a) Persons aged 15 years and over (excluding overseas visitors)

Summary Totals

CD	Postgraduate Degree	Graduate Diploma and Graduate Certificate	Bachelor Degree	Advanced Diploma and Diploma	Certificate	Not stated(b)	Not applicable(c)	Total
Inland rural								
Total	6	9	56	52	192	116	672	1,103
Inland Rural	0.5%	0.8%	5.1%	4.7%	17.4%	10.5%	60.9%	100.0%
Coastal rural								
Total	12	24	91	68	347	143	983	1,668
Coastal Rural	0.7%	1.4%	5.5%	4.1%	20.8%	8.6%	58.9%	100.0%
Crescent Head								
Total	13	27	97	77	155	91	454	914
Crescent Head	1.4%	3.0%	10.6%	8.4%	17.0%	10.0%	49.7%	100.0%
Hat Head								
811	3	0	12	13	50	36	157	271
Hat Head	1.1%	0.0%	4.4%	4.8%	18.5%	13.3%	57.9%	100.0%
Stuarts Point								
304	0	3	13	15	120	73	416	640
Stuarts Point	0.0%	0.5%	2.0%	2.3%	18.8%	11.4%	65.0%	100.0%
Freddo								
302	0	0	19	19	109	68	430	645
Freddo	0.0%	0.0%	2.9%	2.9%	16.9%	10.5%	66.7%	100.0%
Smithtown and Gladstone								
Total	0	0	24	12	119	94	499	748
Smithtown and Gladstone	0.0%	0.0%	3.2%	1.6%	15.9%	12.6%	66.7%	100.0%
Kempsey								
Total	18	16	174	197	919	910	3,838	6,072
Kempsey	0.3%	0.3%	2.9%	3.2%	15.1%	15.0%	63.2%	100.0%
South West Rocks								
Total	12	24	173	177	688	421	2,127	3,622
South West Rocks	0.3%	0.7%	4.8%	4.9%	19.0%	11.6%	58.7%	100.0%
Central Rural								
Total	9	47	208	217	988	564	3,075	5,108
Central Rural	0.2%	0.9%	4.1%	4.2%	19.3%	11.0%	60.2%	100.0%
Total Shire								
Total	73	150	867	847	3,687	2,516	12,651	20,791
Total Shire	0.4%	0.7%	4.2%	4.1%	17.7%	12.1%	60.8%	100.0%
Mid North Coast								
Total	1,374	2,013	11,722	10,874	39,847	25,794	123,917	215,541
Mid North Coast	0.6%	0.9%	5.4%	5.0%	18.5%	12.0%	57.5%	100.0%
NSW								
Total	109,623	60,950	506,806	312,187	819,902	616,881	2,571,469	4,997,818
NSW	2.2%	1.2%	10.1%	6.2%	16.4%	12.3%	51.5%	100.0%

AUSTRALIAN BUREAU OF STATISTICS 2001 Census of Population and Housing

Summary Totals

B25 AGE BY LABOUR FORCE STATUS (FULL-TIME/PART-TIME) BY SEX

Persons Aged 15 Years & Over (Excluding Overseas Visitors)

	Employed, working				Unemployed looking for:			Unemployment Rate	Total labour force	Not in the labour force	Not stated(c)	Total
	Full-time(a)	Part-time	Not stated(b)	Total employed	Full-time work	Part-time work	Total unemployed					
Inland rural												
Total	208	173	9	390	100	18	118		508	548	46	1,102
Inland Rural	18.9%	15.7%	0.8%	35.4%	9.1%	1.6%	10.7%	23.2%	46.1%	49.7%	4.2%	100.0%
Coastal rural												
Total	462	326	30	818	102	27	129		947	685	30	1,662
Coastal Rural	27.8%	19.6%	1.8%	49.2%	6.1%	1.6%	7.8%	13.6%	57.0%	41.2%	1.8%	100.0%
Crescent Head												
Total	266	180	3	449	33	18	51		500	368	28	896
Crescent Head	29.7%	20.1%	0.3%	50.1%	3.7%	2.0%	5.7%	10.2%	55.8%	41.1%	3.1%	100.0%
Hat Head												
Total	42	41	0	83	25	3	28		111	152	19	282
Hat Head	14.9%	14.5%	0.0%	29.4%	8.9%	1.1%	9.9%	25.2%	39.4%	53.9%	6.7%	100.0%
Stuarts Point												
Total	74	72	6	152	30	12	42		194	421	26	641
Stuarts Point	11.5%	11.2%	0.9%	23.7%	4.7%	1.9%	6.6%	21.6%	30.3%	65.7%	4.1%	100.0%
Freddo												
Total	159	115	9	283	53	19	72		355	287	16	658
Freddo	24.2%	17.5%	1.4%	43.0%	8.1%	2.9%	10.9%	20.3%	54.0%	43.6%	2.4%	100.0%
Smithtown and Gladstone												
Total	191	129	12	332	51	16	67		399	343	20	762
Smithtown and Gladstone	25.1%	16.9%	1.6%	43.6%	6.7%	2.1%	8.8%	16.8%	52.4%	45.0%	2.6%	100.0%
Kempsey												
Total	1,222	907	73	2,202	404	124	528		2,730	3,074	291	6,095
Kempsey	20.0%	14.9%	1.2%	36.1%	6.6%	2.0%	8.7%	19.3%	44.8%	50.4%	4.8%	100.0%
South West Rocks												
Total	646	582	36	1,264	172	42	214		1,478	2,027	118	3,623
South West Rocks	17.8%	16.1%	1.0%	34.9%	4.7%	1.2%	5.9%	14.5%	40.8%	55.9%	3.3%	100.0%
Central Rural												
Total	1,409	938	78	2,425	326	103	429		2,854	2,108	148	5,110
Central Rural	27.6%	18.4%	1.5%	47.5%	6.4%	2.0%	8.4%	15.0%	55.9%	41.3%	2.9%	100.0%
Total Shire												
Total	4,679	3,463	256	8,398	1,296	382	1,678		10,076	10,013	742	20,831
Total Shire	22.5%	16.6%	1.2%	40.3%	6.2%	1.8%	8.1%	16.7%	48.4%	48.1%	3.6%	100.0%
Mid North Coast												
Total	52,338	36,952	2,781	92,071	10,624	3,422	14,046		106,117	101,743	7,681	215,541
Mid North Coast	24.3%	17.1%	1.3%	42.7%	4.9%	1.6%	6.5%	13.2%	49.2%	47.2%	3.6%	100.0%
NSW												
Total	1,805,433	858,483	84,480	2,748,396	152,074	61,122	213,196		2,961,592	1,799,540	236,686	4,997,818
NSW	36.1%	17.2%	1.7%	55.0%	3.0%	1.2%	4.3%	7.2%	59.3%	36.0%	4.7%	100.0%

AUSTRALIAN BUREAU OF STATISTICS 2001 Census of Population and Housing

Summary Totals

B26 INDUSTRY BY AGE BY SEX

CD	Agriculture, Forestry and Fishing	Mining	Manufacturing	Electricity, Gas and Water Supply	Construction	Wholesale Trade	Retail Trade	Accommodation, Cafes and Restaurants	Transport and Storage	Communication Services	Finance and Insurance	Property and Business Services	Government Administration and Defence	Education	Health and Community Services	Cultural and Recreational Services	Personal and Other Services	Non-classifiable economic units	Not stated	Total
Inland rural																				
Total	100	0	30	0	19	3	40	24	21	3	3	6	15	51	40	3	0	6	9	373
Inland Rural	26.8%	0.0%	8.0%	0.0%	5.1%	0.8%	10.7%	6.4%	5.6%	0.8%	0.8%	1.6%	4.0%	13.7%	10.7%	0.8%	0.0%	1.6%	2.4%	100.0%
Coastal rural																				
Total	182	3	64	12	60	22	93	46	24	3	15	36	12	71	84	6	12	6	15	766
Coastal Rural	23.8%	0.4%	8.4%	1.6%	7.8%	2.9%	12.1%	6.0%	3.1%	0.4%	2.0%	4.7%	1.6%	9.3%	11.0%	0.8%	1.6%	0.8%	2.0%	100.0%
Crescent Head																				
Total	16	3	18	6	32	9	72	38	12	3	3	37	22	97	62	6	15	0	0	451
Crescent Head	3.5%	0.7%	4.0%	1.3%	7.1%	2.0%	16.0%	8.4%	2.7%	0.7%	0.7%	8.2%	4.9%	21.5%	13.7%	1.3%	3.3%	0.0%	0.0%	100.0%
Hat Head																				
Total	811	3	0	6	8	0	12	15	3	3	0	3	6	9	11	3	0	0	0	82
Hat Head	3.7%	0.0%	7.3%	0.0%	9.8%	0.0%	14.6%	18.3%	3.7%	3.7%	0.0%	3.7%	7.3%	11.0%	13.4%	3.7%	0.0%	0.0%	0.0%	100.0%
Stuarts Point																				
Total	304	18	0	13	0	6	6	26	12	3	3	0	3	10	12	11	0	9	0	132
Stuarts Point	13.6%	0.0%	9.8%	0.0%	4.5%	4.5%	19.7%	9.1%	2.3%	2.3%	0.0%	2.3%	7.6%	9.1%	8.3%	0.0%	6.8%	0.0%	0.0%	100.0%
Freddo																				
Total	302	12	0	37	3	18	12	59	20	17	12	6	9	15	38	3	9	0	13	302
Freddo	4.0%	0.0%	12.3%	1.0%	6.0%	4.0%	19.5%	6.6%	5.6%	4.0%	2.0%	3.0%	6.3%	5.0%	12.6%	1.0%	3.0%	0.0%	4.3%	100.0%
Smithtown and Gladstone																				
Total	3	0	65	0	16	15	71	19	12	12	3	20	15	10	32	3	15	6	6	323
Smithtown and Gladstone	0.9%	0.0%	20.1%	0.0%	5.0%	4.6%	22.0%	5.9%	3.7%	3.7%	0.9%	6.2%	4.6%	3.1%	9.9%	0.9%	4.6%	1.9%	1.9%	100.0%
West Kempsey																				
Total	18	3	150	9	73	46	334	94	66	21	34	75	67	81	187	21	52	12	27	1,370
West Kempsey	1.3%	0.2%	10.9%	0.7%	5.3%	3.4%	24.4%	6.9%	4.8%	1.5%	2.5%	5.5%	4.9%	5.9%	13.6%	1.5%	3.8%	0.9%	2.0%	100.0%
East Kempsey																				
Total	15	3	78	9	49	24	154	27	50	6	18	44	32	25	99	9	37	0	3	682
East Kempsey	2.2%	0.4%	11.4%	1.3%	7.2%	3.5%	22.6%	4.0%	7.3%	0.9%	2.6%	6.5%	4.7%	3.7%	14.5%	1.3%	5.4%	0.0%	0.4%	100.0%
South Kempsey																				
Total	3	0	34	3	21	9	39	18	12	3	6	6	15	15	13	6	12	3	0	218
South Kempsey	1.4%	0.0%	15.6%	1.4%	9.6%	4.1%	17.9%	8.3%	5.5%	1.4%	2.8%	2.8%	6.9%	6.9%	6.0%	2.8%	5.5%	1.4%	0.0%	100.0%
Kempsey																				
Total	36	6	262	21	143	79	527	139	128	30	58	125	114	121	299	36	101	15	30	2,270
Kempsey	1.6%	0.3%	11.5%	0.9%	6.3%	3.5%	23.2%	6.1%	5.6%	1.3%	2.6%	5.5%	5.0%	5.3%	13.2%	1.6%	4.4%	0.7%	1.3%	100.0%
South West Rocks																				
Total	63	0	98	6	125	54	251	151	30	18	36	129	36	86	142	33	54	6	33	1,351
South West Rocks	4.7%	0.0%	7.3%	0.4%	9.3%	4.0%	18.6%	11.2%	2.2%	1.3%	2.7%	9.5%	2.7%	6.4%	10.5%	2.4%	4.0%	0.4%	2.4%	100.0%
Central Rural																				
Total	193	3	249	24	177	96	466	91	143	39	27	103	123	178	319	39	45	24	51	2,390
Central Rural	8.1%	0.1%	10.4%	1.0%	7.4%	4.0%	19.5%	3.8%	6.0%	1.6%	1.1%	4.3%	5.1%	7.4%	13.3%	1.6%	1.9%	1.0%	2.1%	100.0%
Total Shire																				
Total	626	15	842	72	604	296	1,617	555	393	126	151	471	372	650	1,038	132	260	63	157	8,440
Total Shire	7.4%	0.2%	10.0%	0.9%	7.2%	3.5%	19.2%	6.6%	4.7%	1.5%	1.8%	5.6%	4.4%	7.7%	12.3%	1.6%	3.1%	0.7%	1.9%	100.0%
Mid North Coast																				
Total	6,043	128	7,586	927	7,010	4,077	17,114	6,605	3,179	1,327	2,025	6,736	3,779	7,274	10,900	1,952	3,357	329	1,722	92,070
Mid North Coast	6.6%	0.1%	8.2%	1.0%	7.6%	4.4%	18.6%	7.2%	3.5%	1.4%	2.2%	7.3%	4.1%	7.9%	11.8%	2.1%	3.6%	0.4%	1.9%	100.0%
NSW																				
Total	92,358	14,823	316,113	20,389	189,740	152,790	390,914	141,927	125,752	54,958	131,955	334,299	105,380	187,168	258,522	67,595	98,321	14,884	50,508	2,748,396
NSW	3.4%	0.5%	11.5%	0.7%	6.9%	5.6%	14.2%	5.2%	4.6%	2.0%	4.8%	12.2%	3.8%	6.8%	9.4%	2.5%	3.6%	0.5%	1.8%	100.0%

AUSTRALIAN BUREAU OF STATISTICS 2001 Census of Population and Housing

Summary Totals

B27 OCCUPATION BY AGE BY SEX

CD	Managers and Administrators	Professionals	Associate Professionals	Tradespersons and Related Workers	Advanced Clerical and Service Workers	Intermediate Clerical, Sales and Service Workers	Intermediate Production and Transport Workers	Elementary Clerical, Sales and Service Workers	Labourers and Related Workers	Inadequately described	Not stated	Total
Inland rural												
Total	78	60	30	40	24	55	24	31	42	0	3	387
Inland Rural	20.2%	15.5%	7.8%	10.3%	6.2%	14.2%	6.2%	8.0%	10.9%	0.0%	0.8%	100.0%
Coastal rural												
Total	172	121	63	94	27	91	63	58	71	6	15	781
Coastal Rural	22.0%	15.5%	8.1%	12.0%	3.5%	11.7%	8.1%	7.4%	9.1%	0.8%	1.9%	100.0%
Crescent Head												
Total	37	119	51	56	18	66	23	43	25	0	0	438
Crescent Head	8.4%	27.2%	11.6%	12.8%	4.1%	15.1%	5.3%	9.8%	5.7%	0.0%	0.0%	100.0%
Hat Head												
811	3	15	3	14	3	17	6	6	13	0	0	80
Hat Head	3.8%	18.8%	3.8%	17.5%	3.8%	21.3%	7.5%	7.5%	16.3%	0.0%	0.0%	100.0%
Stuarts Point												
304	16	20	18	10	6	21	12	27	31	0	0	161
Stuarts Point	9.9%	12.4%	11.2%	6.2%	3.7%	13.0%	7.5%	16.8%	19.3%	0.0%	0.0%	100.0%
Freddo												
302	11	29	26	49	12	56	30	39	40	0	9	301
Freddo	3.7%	9.6%	8.6%	16.3%	4.0%	18.6%	10.0%	13.0%	13.3%	0.0%	3.0%	100.0%
Smithtown and Gladstone												
Total	22	24	31	51	8	56	46	27	46	3	15	329
Smithtown and Gladstone	6.7%	7.3%	9.4%	15.5%	2.4%	17.0%	14.0%	8.2%	14.0%	0.9%	4.6%	100.0%
Kempsey												
Total	93	232	236	305	76	398	265	295	281	9	15	2,205
Kempsey	4.2%	10.5%	10.7%	13.8%	3.4%	18.0%	12.0%	13.4%	12.7%	0.4%	0.7%	100.0%
South West Rocks												
Total	102	204	184	161	48	188	87	134	147	9	18	1,282
South West Rocks	8.0%	15.9%	14.4%	12.6%	3.7%	14.7%	6.8%	10.5%	11.5%	0.7%	1.4%	100.0%
Central Rural												
Total	242	320	214	348	73	395	277	284	282	6	33	2,474
Central Rural	9.8%	12.9%	8.6%	14.1%	3.0%	16.0%	11.2%	11.5%	11.4%	0.2%	1.3%	100.0%
Total Shire												
776	1,144	856	1,128	295	1,343	833	944	978	33	108	8,438	
Total Shire	9.2%	13.6%	10.1%	13.4%	3.5%	15.9%	9.9%	11.2%	11.6%	0.4%	1.3%	100.0%
Mid North Coast												
Total	8,220	13,773	10,840	11,826	3,321	15,218	7,402	10,134	9,437	650	1,250	92,071
Mid North Coast	8.9%	15.0%	11.8%	12.8%	3.6%	16.5%	8.0%	11.0%	10.2%	0.7%	1.4%	100.0%
NSW												
Total	259,687	526,101	319,470	327,996	114,134	453,866	215,995	256,391	218,795	22,654	33,307	2,748,396
NSW	9.4%	19.1%	11.6%	11.9%	4.2%	16.5%	7.9%	9.3%	8.0%	0.8%	1.2%	100.0%

AUSTRALIAN BUREAU OF STATISTICS 2001 Census of Population and Housing

Summary Totals

B31 WEEKLY HOUSEHOLD INCOME BY HOUSEHOLD TYPE

CD	Negative/Nil income	\$1-\$199	\$200-\$299	\$300-\$399	\$400-\$499	\$500-\$599	\$600-\$699	\$700-\$799	\$800-\$999	\$1,000-\$1,199	\$1,200-\$1,499	\$1,500-\$1,999	\$2,000 or more	Partial income stated(b)	All incomes not stated(c)	Total
Inland rural																
Total	9	72	48	104	63	42	40	24	21	21	13	8	4	39	13	521
Inland Rural	1.7%	13.8%	9.2%	20.0%	12.1%	8.1%	7.7%	4.6%	4.0%	4.0%	2.5%	1.5%	0.8%	7.5%	2.5%	100.0%
Coastal rural																
Total	0	41	63	117	88	58	52	39	67	57	44	23	6	78	19	752
Coastal Rural	0.0%	5.5%	8.4%	15.6%	11.7%	7.7%	6.9%	5.2%	8.9%	7.6%	5.9%	3.1%	0.8%	10.4%	2.5%	100.0%
Crescent Head																
Total	0	25	38	46	44	42	37	7	48	37	25	27	22	29	16	443
Crescent Head	0.0%	5.6%	8.6%	10.4%	9.9%	9.5%	8.4%	1.6%	10.8%	8.4%	5.6%	6.1%	5.0%	6.5%	3.6%	100.0%
Hat Head																
Total	0	10	18	18	15	8	15	3	10	8	4	5	3	9	6	132
Hat Head	0.0%	7.6%	13.6%	13.6%	11.4%	6.1%	11.4%	2.3%	7.6%	6.1%	3.0%	3.8%	2.3%	6.8%	4.5%	100.0%
Stuarts Point																
Total	3	21	39	73	57	19	17	12	16	6	7	7	3	15	16	311
Stuarts Point	1.0%	6.8%	12.5%	23.5%	18.3%	6.1%	5.5%	3.9%	5.1%	1.9%	2.3%	2.3%	1.0%	4.8%	5.1%	100.0%
Freddo																
Total	6	22	33	65	36	30	20	22	26	20	10	8	4	17	13	332
Freddo	1.8%	6.6%	9.9%	19.6%	10.8%	9.0%	6.0%	6.6%	7.8%	6.0%	3.0%	2.4%	1.2%	5.1%	3.9%	100.0%
Smithtown and Gladstone																
Total	3	20	43	61	51	27	25	18	38	19	17	13	3	29	16	383
Smithtown and Gladstone	0.8%	5.2%	11.2%	15.9%	13.3%	7.0%	6.5%	4.7%	9.9%	5.0%	4.4%	3.4%	0.8%	7.6%	4.2%	100.0%
Kempsey																
Total	15	231	438	434	321	220	221	165	207	135	116	83	55	165	177	2,983
Kempsey	0.5%	7.7%	14.7%	14.5%	10.8%	7.4%	7.4%	5.5%	6.9%	4.5%	3.9%	2.8%	1.8%	5.5%	5.9%	100.0%
South West Rocks																
Total	9	98	180	331	238	79	122	73	123	81	65	57	26	76	81	1,639
South West Rocks	0.5%	6.0%	11.0%	20.2%	14.5%	4.8%	7.4%	4.5%	7.5%	4.9%	4.0%	3.5%	1.6%	4.6%	4.9%	100.0%
Central Rural																
Total	9	147	145	359	250	144	190	126	219	162	134	104	79	195	88	2,351
Central Rural	0.4%	6.3%	6.2%	15.3%	10.6%	6.1%	8.1%	5.4%	9.3%	6.9%	5.7%	4.4%	3.4%	8.3%	3.7%	100.0%
Total Shire																
Total	54	687	1,045	1,608	1,163	669	739	489	775	546	435	335	205	652	445	9,847
Total Shire	0.5%	7.0%	10.6%	16.3%	11.8%	6.8%	7.5%	5.0%	7.9%	5.5%	4.4%	3.4%	2.1%	6.6%	4.5%	100.0%
Mid North Coast																
Total	16,564	19,955	21,999	18,072	10,519	11,800	14,320	17,859	21,047	19,803	18,850	16,650	15,524	14,583	13,855	251,400
Mid North Coast	6.6%	7.9%	8.8%	7.2%	4.2%	4.7%	5.7%	7.1%	8.4%	7.9%	7.5%	6.6%	6.2%	5.8%	5.5%	100.0%
NSW																
Total	422,341	445,983	445,026	436,626	408,719	446,515	468,524	483,003	482,318	438,277	412,967	325,330	267,064	228,029	217,237	5,927,959
NSW	7.1%	7.5%	7.5%	7.4%	6.9%	7.5%	7.9%	8.1%	8.1%	7.4%	7.0%	5.5%	4.5%	3.8%	3.7%	100.0%

References

1. The Hunter Valley Research Foundation, July 2003. *Mid North Coast Regional Profile. A socio –economic profile of the Mid North Coast Region*. Prepared for the Department of Infrastructure, Planning and Natural Resources.
2. Australian Bureau of Statistics (ABS)- 1991, 1996 & 2001 Census
3. Coffs Harbour City Council , 2004. *Coffs Harbour City Population Profile 2004*
4. Department of Infrastructure & Natural Resources, Transport & Population Data Centre. *NSW Statistical Local Area Population Projections 2001- 2031, 2004 Release*

KEMPSEY SHIRE

Population Profile 2005



KEMPSEY
Shire Council

Produced by
KEMPSEY SHIRE COUNCIL
October 2005