

## Legend

Depth (m)		Road flooding location ID and depth
0 - 0.2	●	Selected roads for assessment
0.2 - 0.5	—	Other roads
0.5 - 1		
1 - 2		
2 - 3		
3 - 4		
> 4		

# Jacobs

COPYRIGHT: The concepts and information contained in this document are the intellectual property of Jacobs. Use or copying of the document in whole or in part without written permission of Jacobs constitutes an infringement of copyright.

A3

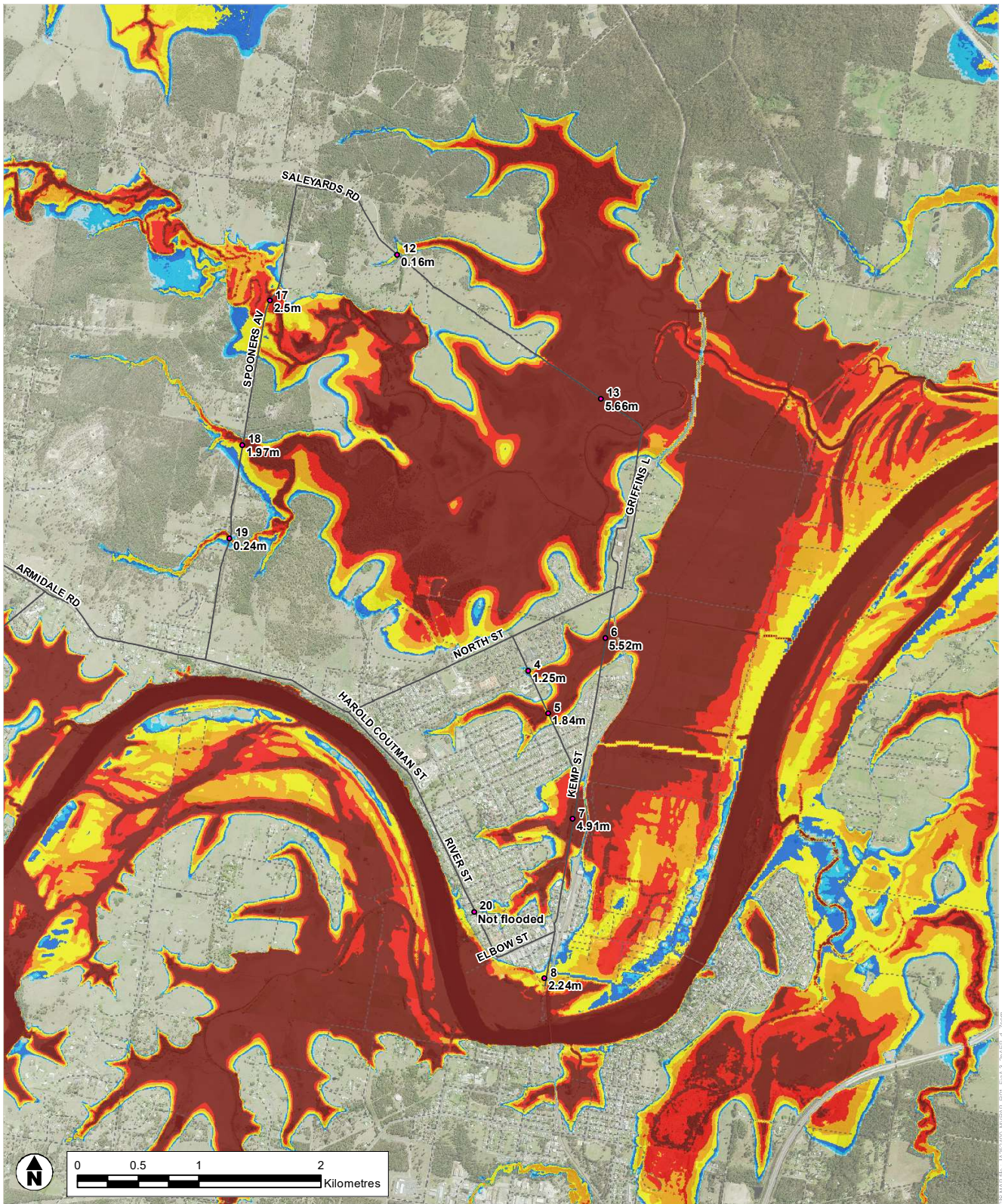
SHEET 2 of 3

GDA 1994 MGA Zone 56

TITLE  
5% AEP Event  
Flood Depth

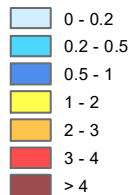
DRAWN	CC	PROJECT #	MAP #	REV	VER
		IA252400		1	1
CHECK	LC	DATE	FIGURE A-2(A)		
		22/10/2022			





## Legend

### Depth (m)



- Road flooding location ID and depth
- Selected roads for assessment
- Other roads

# Jacobs

COPYRIGHT : The concepts and information contained in this document are the intellectual property of Jacobs. Use or copying of the document in whole or in part without written permission of Jacobs constitutes an infringement of copyright.

A3

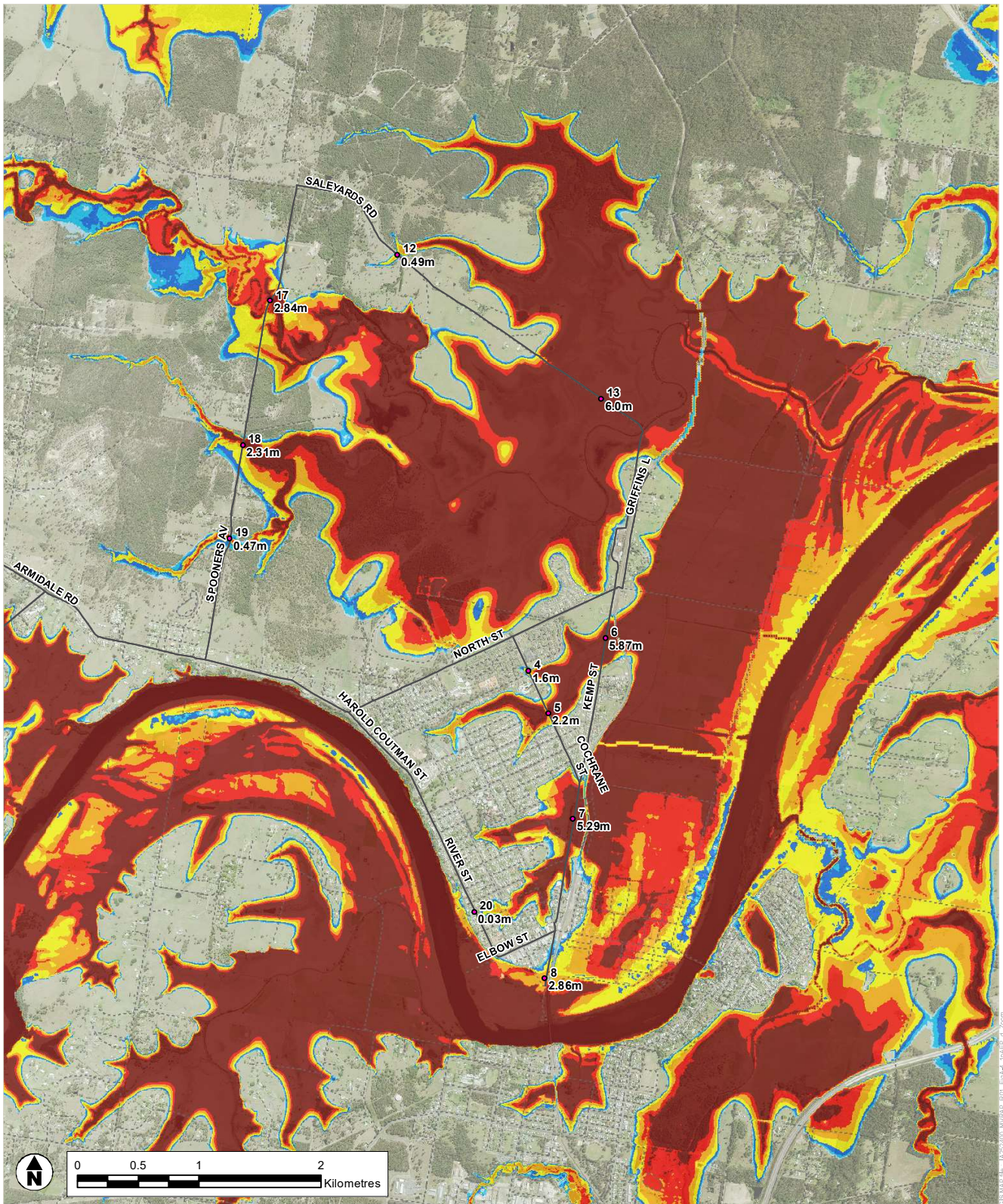
SHEET 2 of 3

GDA 1994 MGA Zone 56

TITLE  
2% AEP Event  
Flood Depth

DRAWN	CC	PROJECT #	MAP #	REV	VER
		IA252400		1	1
CHECK	LC	DATE	FIGURE A-3(A)		
		22/10/2022			





## Legend

Depth (m)		Road flooding location ID and depth
0 - 0.2	●	Selected roads for assessment
0.2 - 0.5	—	Other roads
0.5 - 1	---	
1 - 2		
2 - 3		
3 - 4		
> 4		

# Jacobs

COPYRIGHT: The concepts and information contained in this document are the intellectual property of Jacobs. Use or copying of the document in whole or in part without written permission of Jacobs constitutes an infringement of copyright.

SHEET 2 of 3		A3	
GDA 1994 MGA Zone 56			
TITLE		1% AEP Event Flood Depth	